

Certificate of Acceptance of new water and/or wastewater assets

Watercare reference number:

9	1	8	2	2			
---	---	---	---	---	--	--	--

Auckland Council EPA number:

6	0	3	0	8	8	1	6		
---	---	---	---	---	---	---	---	--	--

Site details

Job name:

Legal site address: Street number Street name

Suburb Postcode

Lot number Deposited plan (DP) number Certificate of Title (CT) number

Stage/s that relates to this certificate

Certification statement

Watercare has received the following documentation:

- As-built (PDF)
 As-built CAD (DWG)
 Watercare Schedule of assets
 CS3
 CS4

This Watercare Certificate of Acceptance is issued with respect to all aspects of the engineering water and/or wastewater works covered by the above engineering plan approval and to satisfy Auckland Council's engineering approval completion certificate.

The assets have been connected correctly to the existing public networks.

The total value of these assets to be vested to Auckland Council is:

Watercare representative

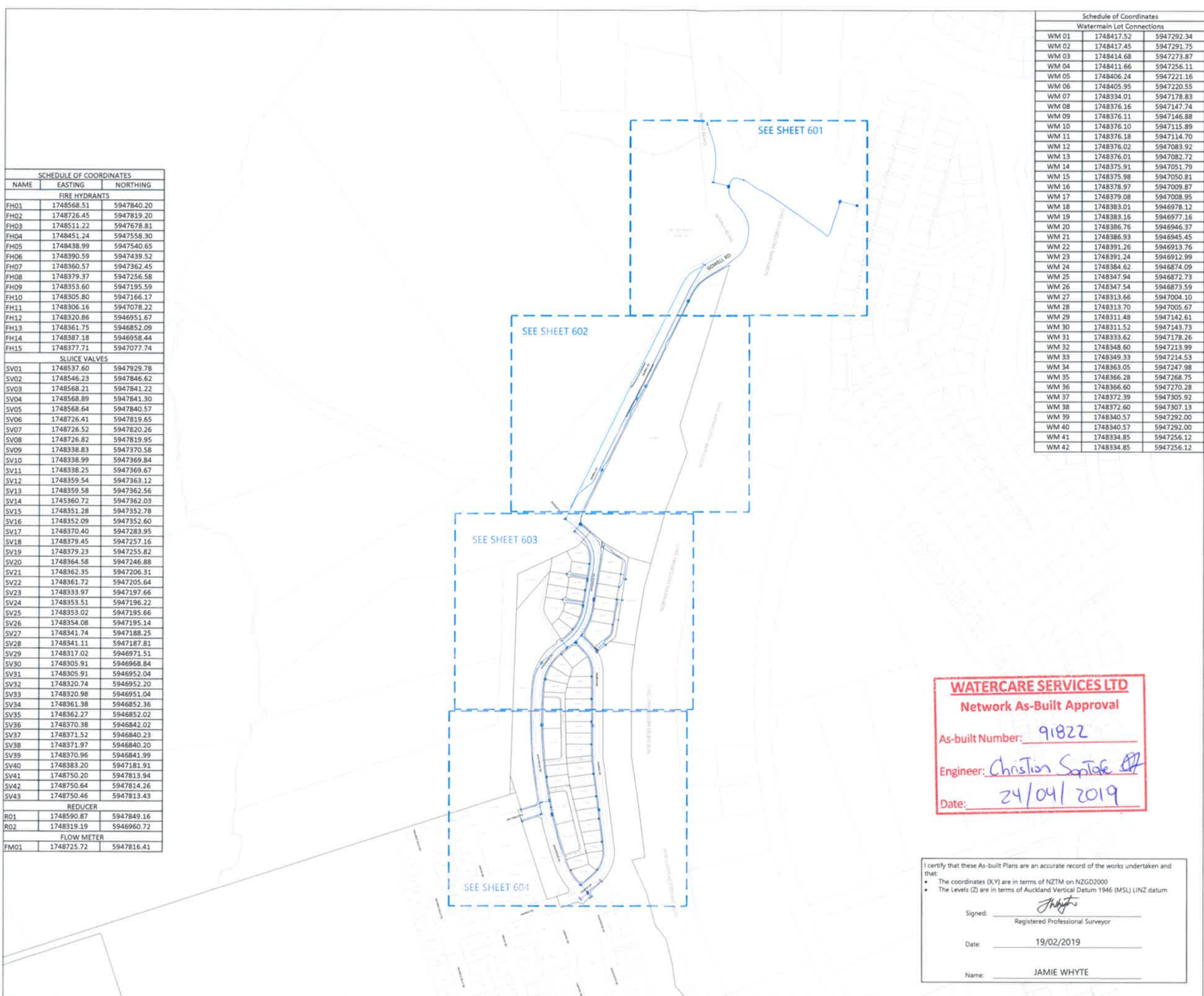
Full name Signature

Date



SCHEDULE OF COORDINATES		
NAME	EASTING	NORTHING
FIRE HYDRANTS		
FH01	1748568.51	5947840.20
FH02	1748726.45	5947819.20
FH03	1748511.22	5947678.81
FH04	1748451.24	5947558.30
FH05	1748438.99	5947540.65
FH06	1748390.59	5947439.52
FH07	1748360.57	5947362.45
FH08	1748379.37	5947256.58
FH09	1748353.60	5947195.59
FH10	1748305.80	5947166.17
FH11	1748306.16	5947078.22
FH12	1748320.86	5946951.67
FH13	1748361.75	5946852.09
FH14	1748387.18	5946958.44
FH15	1748377.71	5947077.74
SLUICE VALVES		
SV01	1748537.60	5947929.78
SV02	1748546.23	5947846.62
SV03	1748568.21	5947841.22
SV04	1748568.89	5947841.30
SV05	1748568.64	5947840.57
SV06	1748726.41	5947819.65
SV07	1748726.52	5947820.26
SV08	1748726.82	5947819.95
SV09	1748338.83	5947370.58
SV10	1748338.99	5947369.84
SV11	1748338.25	5947369.67
SV12	1748359.54	5947363.12
SV13	1748359.58	5947362.56
SV14	1745360.72	5947362.03
SV15	1748351.28	5947352.78
SV16	1748352.09	5947352.60
SV17	1748370.40	5947283.95
SV18	1748379.45	5947257.16
SV19	1748379.23	5947255.82
SV20	1748364.58	5947246.88
SV21	1748362.35	5947206.31
SV22	1748361.72	5947205.64
SV23	1748333.97	5947197.66
SV24	1748353.51	5947196.22
SV25	1748353.02	5947195.66
SV26	1748354.08	5947195.14
SV27	1748341.74	5947188.25
SV28	1748341.11	5947187.81
SV29	1748317.02	5946971.51
SV30	1748305.91	5946968.84
SV31	1748305.91	5946952.04
SV32	1748320.74	5946952.20
SV33	1748320.98	5946951.04
SV34	1748361.38	5946852.36
SV35	1748362.27	5946852.02
SV36	1748370.38	5946842.02
SV37	1748371.52	5946840.23
SV38	1748371.97	5946840.20
SV39	1748370.96	5946841.99
SV40	1748383.20	5947181.91
SV41	1748750.20	5947813.94
SV42	1748750.64	5947814.26
SV43	1748750.46	5947813.43
REDUCER		
RD1	1748590.87	5947849.16
RD2	1748319.19	5946960.72
FLOW METER		
FM01	1748725.72	5947816.41

Schedule of Coordinates		
Watermain Lot Connections		
WM 01	1748417.52	5947292.34
WM 02	1748417.45	5947291.75
WM 03	1748414.68	5947273.87
WM 04	1748411.66	5947256.11
WM 05	1748406.24	5947221.16
WM 06	1748405.95	5947220.55
WM 07	1748334.01	5947178.83
WM 08	1748376.16	5947147.74
WM 09	1748376.11	5947146.88
WM 10	1748376.10	5947115.89
WM 11	1748376.18	5947114.70
WM 12	1748376.02	5947083.92
WM 13	1748376.01	5947082.72
WM 14	1748375.91	5947051.79
WM 15	1748375.98	5947050.81
WM 16	1748378.97	5947009.87
WM 17	1748379.08	5947008.95
WM 18	1748383.01	5946978.12
WM 19	1748383.16	5946977.16
WM 20	1748386.76	5946946.37
WM 21	1748386.93	5946945.45
WM 22	1748391.26	5946913.76
WM 23	1748391.24	5946912.99
WM 24	1748384.62	5946874.09
WM 25	1748347.94	5946872.73
WM 26	1748347.54	5946873.59
WM 27	1748313.66	5947004.10
WM 28	1748313.70	5947005.67
WM 29	1748311.48	5947142.61
WM 30	1748311.52	5947143.73
WM 31	1748333.62	5947178.26
WM 32	1748348.60	5947213.99
WM 33	1748349.33	5947214.53
WM 34	1748363.05	5947247.98
WM 35	1748366.28	5947268.75
WM 36	1748366.60	5947270.28
WM 37	1748372.39	5947305.92
WM 38	1748372.60	5947307.13
WM 39	1748340.57	5947292.00
WM 40	1748340.57	5947292.00
WM 41	1748334.85	5947256.12
WM 42	1748334.85	5947256.12



- NOTES**
1. ALL WORK AND MATERIALS COMPLIES WITH AC STANDARD FOR ENGINEERING DESIGN AND CONSTRUCTION
 2. PIPE BEDDING COMPLIES WITH AC STD DETAIL DRAWING 18000 SHEET 4.4 UNLESS OTHERWISE NOTED
 3. WATERMANS ARE AN AVERAGE 0.6m BELOW GROUND IN BERMS AND 0.9m BELOW GROUND UNDER ROADS. HARDFILL BACKFILLED BENEATH ROAD CROSSINGS
 4. ALL PIPES ARE LAID 1.4m OFF THE ROAD RESERVE BOUNDARY IN THE COMMON SERVICE TRENCH.
 5. PIPE SIZES SHOWN ARE EXTERNAL DIAMETER.
 6. LOT BOUNDARIES ARE SUBJECT TO FINAL SURVEY.
 7. ASBUILT DATA HAS BEEN SOURCED FROM A COMBINATION OF WOODS SURVEY MEASURED DATA AND CONTRACTOR RECEIVED DATA.

LEGEND

EXISTING WATERMAIN	—
HIGH PESSURE WATERMAIN	—
SLUICE VALVE	
PEET VALVE	
FIRE HYDRANT	
BLANK CAP	
STAGE BOUNDARY	---

REVISION DETAILS	BY	DATE
1 ISSUED FOR INFORMATION	KR	04/02/19
2 SV41 - SV43 ADDED	KR	19/02/19
3 RD02 & WM TO 1B BDY	JW	18/04/19

SURVEYED	WOODS	WOODS Ltd LEVEL 1 BUILDING 8 8 NUGENT STREET, GRAFTON AUCKLAND 1023 09 308 9229 WOODS.CO.NZ
DESIGNED	JW	
DRAWN	KR	
CHECKED	NM	
APPROVED	JW	

WATERCARE SERVICES LTD
Network As-Built Approval
 As-built Number: 91822
 Engineer: Christian Spittle
 Date: 24/04/2019



MILLDALE
STAGE 1A
WATERMAIN
ASBUILT PLAN
SHEET 1 OF 5

I certify that these As-built Plans are an accurate record of the works undertaken and that:

- The coordinates (X,Y) are in terms of NZTM on NZGD2000
- The Levels (Z) are in terms of Auckland Vertical Datum 1946 (MSL) LINZ datum

Signed: J Whyte
 Registered Professional Surveyor
 Date: 19/02/2019
 Name: JAMIE WHYTE

STATUS	ISSUED FOR INFORMATION	REV
SCALE	1 : 5000 @ A3	3
COUNCIL	AUCKLAND COUNCIL	
DWG NO	P16-270-01A-600-AB	



SCHEDULE OF COORDINATES		
NAME	EASTING	NORTHING
FIRE HYDRANTS		
FH01	1748568.51	5947840.20
FH02	1748726.45	5947819.20
FH03	1748511.22	5947678.81
FH04	1748451.24	5947558.30
FH05	1748438.99	5947540.65
FH06	1748390.59	5947439.52
FH07	1748360.57	5947362.45
FH08	1748379.37	5947256.58
FH09	1748353.60	5947195.59
FH10	1748305.80	5947166.17
FH11	1748306.16	5947078.22
FH12	1748320.86	5946951.67
FH13	1748361.75	5946852.09
FH14	1748387.18	5946958.44
FH15	1748377.71	5947077.74
SLUICE VALVES		
SV01	1748537.60	5947929.78
SV02	1748546.23	5947846.62
SV03	1748568.21	5947841.22
SV04	1748568.89	5947841.30
SV05	1748568.64	5947840.57
SV06	1748726.41	5947819.65
SV07	1748726.52	5947820.26
SV08	1748726.82	5947819.95
SV09	1748338.83	5947370.58
SV10	1748338.99	5947369.84
SV11	1748338.25	5947369.67
SV12	1748359.54	5947363.12
SV13	1748359.58	5947362.56
SV14	1745360.72	5947362.03
SV15	1748351.28	5947352.78
SV16	1748352.09	5947352.60
SV17	1748370.40	5947283.95
SV18	1748379.45	5947257.16
SV19	1748379.23	5947255.82
SV20	1748364.58	5947246.88
SV21	1748362.35	5947206.31
SV22	1748361.72	5947205.64
SV23	1748333.97	5947197.66
SV24	1748353.51	5947196.22
SV25	1748353.02	5947195.66
SV26	1748354.08	5947195.14
SV27	1748341.74	5947188.25
SV28	1748341.11	5947187.81
SV29	1748317.02	5946971.51
SV30	1748305.91	5946968.84
SV31	1748305.91	5946952.04
SV32	1748320.74	5946952.20
SV33	1748320.98	5946951.04
SV34	1748361.38	5946852.36
SV35	1748362.27	5946852.02
SV36	1748370.38	5946842.02
SV37	1748371.52	5946840.23
SV38	1748371.97	5946840.20
SV39	1748370.96	5946841.99
SV40	1748383.20	5947181.91
SV41	1748750.20	5947813.94
SV42	1748750.64	5947814.26
SV43	1748750.46	5947813.43
REDUCER		
R01	1748590.87	5947849.16
R02	1748319.19	5946960.72
FLOW METER		
FM01	1748377.71	5947077.74

Schedule of Coordinates		
Watermain Lot Connections		
WM 01	1748417.52	5947292.34
WM 02	1748417.45	5947291.75
WM 03	1748414.68	5947273.87
WM 04	1748411.66	5947256.11
WM 05	1748406.24	5947221.16
WM 06	1748405.95	5947220.55
WM 07	1748394.01	5947178.83
WM 08	1748376.16	5947147.74
WM 09	1748376.11	5947146.88
WM 10	1748376.10	5947115.89
WM 11	1748376.18	5947114.70
WM 12	1748376.02	5947083.92
WM 13	1748376.01	5947082.72
WM 14	1748375.91	5947051.79
WM 15	1748375.98	5947050.81
WM 16	1748378.97	5947009.87
WM 17	1748379.08	5947008.95
WM 18	1748383.01	5946978.12
WM 19	1748383.16	5946977.16
WM 20	1748386.76	5946946.37
WM 21	1748386.93	5946945.45
WM 22	1748391.26	5946913.76
WM 23	1748391.24	5946912.99
WM 24	1748384.62	5946874.09
WM 25	1748347.94	5946872.73
WM 26	1748347.54	5946873.59
WM 27	1748313.66	5947004.10
WM 28	1748313.70	5947005.67
WM 29	1748311.48	5947142.61
WM 30	1748311.52	5947143.73
WM 31	1748333.62	5947178.26
WM 32	1748348.60	5947213.99
WM 33	1748349.33	5947214.53
WM 34	1748363.05	5947247.98
WM 35	1748366.28	5947268.75
WM 36	1748366.60	5947270.28
WM 37	1748372.39	5947305.92
WM 38	1748372.60	5947307.13
WM 39	1748340.57	5947292.00
WM 40	1748340.57	5947292.00
WM 41	1748334.85	5947256.12
WM 42	1748334.85	5947256.12

- NOTES**
1. ALL WORK AND MATERIALS COMPLIES WITH AC STANDARD FOR ENGINEERING DESIGN AND CONSTRUCTION
 2. PIPE BEDDING COMPLIES WITH AC STD DETAIL DRAWING 18000 SHEET 4.4 UNLESS OTHERWISE NOTED.
 3. WATERMAINS ARE AN AVERAGE 0.6m BELOW GROUND IN BERMS AND 0.9m BELOW GROUND UNDER ROADS. HARDFILL BACKFILLED BENEATH ROAD CROSSINGS.
 4. ALL PIPES ARE LAID 1.4m OFF THE ROAD RESERVE BOUNDARY IN THE COMMON SERVICE TRENCH.
 5. PIPE SIZES SHOWN ARE EXTERNAL DIAMETER
 6. LOT BOUNDARIES ARE SUBJECT TO FINAL SURVEY.
 7. ASBUILT DATA HAS BEEN SOURCED FROM A COMBINATION OF WOODS SURVEY MEASURED DATA AND CONTRACTOR RECEIVED DATA.

LEGEND

EXISTING WATERMAIN	—
HIGH PRESSURE WATERMAIN	—
SLUICE VALVE	I
PEET VALVE	D
FIRE HYDRANT	H
BLANK CAP	J
STAGE BOUNDARY	—

REVISION DETAILS	BY	DATE
1 ISSUED FOR INFORMATION	KR	04/02/19
2 SV41 - SV43 ADDED	KR	19/02/19
3 RD02 & WM TO 1B BDY	JW	18/04/19
4 AERIAL IMAGE ADDED	JW	23/04/19

SURVEYED	WOODS	WOODS Ltd LEVEL 1 BUILDING B 8 NUGENT STREET, GRAFTON AUCKLAND 1023 09 308 9229 WOODS.CO.NZ
DESIGNED	JW	
DRAWN	KR	
CHECKED	NM	
APPROVED	JW	



**MILLDALE
STAGE 1A
WATERMAIN
ASBUILT PLAN
SHEET 2 OF 5**

STATUS	ISSUED FOR INFORMATION	REV
SCALE	1:1000 @ A3	4
COUNCIL	AUCKLAND COUNCIL	
DWG NO	P16-270-01A-601-AB	

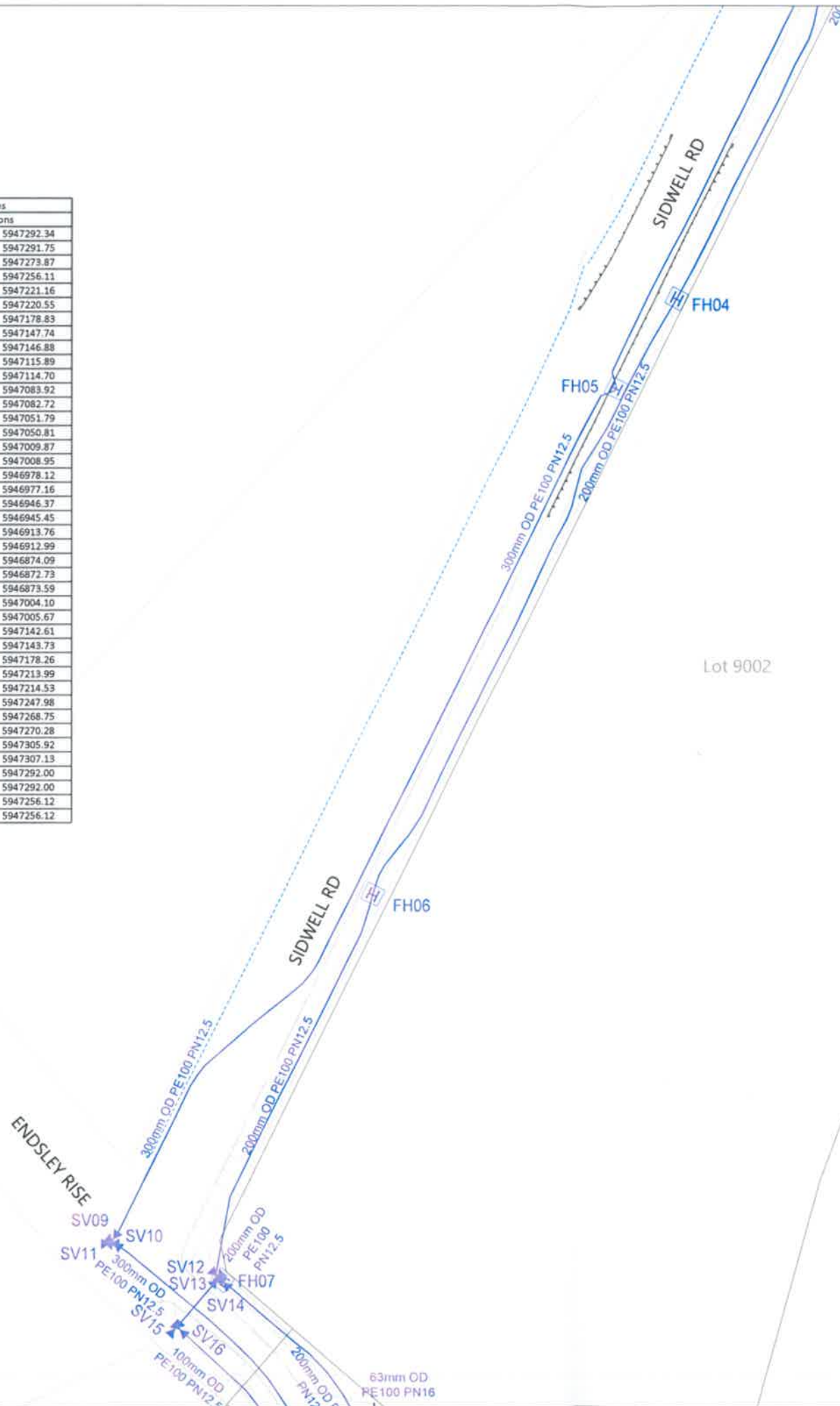
WATERCARE SERVICES LTD
Network As-Built Approval
As-built Number: 91822
Engineer: *Jonathan Santale*
Date: 24/04/2019

I certify that these As-built Plans are an accurate record of the works undertaken and that:
 • The coordinates (X,Y) are in terms of NZTM on NZGD2000
 • The Levels (Z) are in terms of Auckland Vertical Datum 1946 (MSL) LINZ datum

Signed: *J Whyte*
Registered Professional Surveyor
Date: 23/04/2019
Name: JAMIE WHYTE



SCHEDULE OF COORDINATES			Schedule of Coordinates		
NAME	EASTING	NORTHING	Watermain Lot Connections		
FIRE HYDRANTS			WM 01	1748417.52	5947292.34
FH01	1748568.51	5947840.20	WM 02	1748417.45	5947291.75
FH02	1748726.45	5947819.20	WM 03	1748414.68	5947273.87
FH03	1748511.22	5947678.81	WM 04	1748411.66	5947256.11
FH04	1748451.24	5947558.30	WM 05	1748406.24	5947221.16
FH05	1748438.99	5947540.65	WM 06	1748405.95	5947220.55
FH06	1748390.59	5947439.52	WM 07	1748334.01	5947178.83
FH07	1748360.57	5947362.45	WM 08	1748376.16	5947147.74
FH08	1748379.37	5947256.58	WM 09	1748376.11	5947146.88
FH09	1748353.60	5947195.59	WM 10	1748376.10	5947115.89
FH10	1748305.80	5947166.17	WM 11	1748376.18	5947114.70
FH11	1748306.16	5947078.22	WM 12	1748376.02	5947083.92
FH12	1748320.86	5946951.67	WM 13	1748376.01	5947082.72
FH13	1748361.75	5946852.09	WM 14	1748375.91	5947051.79
FH14	1748387.18	5946958.44	WM 15	1748375.98	5947050.81
FH15	1748377.71	5947077.74	WM 16	1748378.97	5947009.87
SLUICE VALVES			WM 17	1748379.08	5947008.95
SV01	1748537.60	5947929.78	WM 18	1748383.01	5946978.12
SV02	1748546.23	5947846.62	WM 19	1748383.16	5946977.16
SV03	1748568.21	5947841.22	WM 20	1748386.76	5946946.37
SV04	1748568.89	5947841.30	WM 21	1748386.93	5946945.45
SV05	1748568.64	5947840.57	WM 22	1748391.26	5946913.76
SV06	1748726.41	5947819.65	WM 23	1748391.24	5946912.99
SV07	1748726.52	5947820.26	WM 24	1748384.62	5946874.09
SV08	1748726.82	5947819.95	WM 25	1748347.94	5946872.73
SV09	1748338.83	5947370.58	WM 26	1748347.54	5946873.59
SV10	1748338.99	5947369.84	WM 27	1748313.66	5947004.10
SV11	1748338.25	5947369.67	WM 28	1748313.70	5947005.67
SV12	1748359.54	5947363.12	WM 29	1748311.48	5947142.61
SV13	1748359.58	5947362.56	WM 30	1748311.52	5947143.73
SV14	1745360.72	5947362.03	WM 31	1748333.62	5947178.26
SV15	1748351.28	5947352.78	WM 32	1748348.60	5947213.99
SV16	1748352.09	5947352.60	WM 33	1748349.33	5947214.53
SV17	1748370.40	5947283.95	WM 34	1748363.05	5947247.98
SV18	1748379.45	5947257.16	WM 35	1748366.28	5947268.75
SV19	1748379.23	5947255.82	WM 36	1748366.60	5947270.28
SV20	1748364.58	5947246.88	WM 37	1748372.39	5947305.92
SV21	1748362.35	5947206.31	WM 38	1748372.60	5947307.13
SV22	1748361.72	5947205.64	WM 39	1748340.57	5947292.00
SV23	1748333.97	5947197.66	WM 40	1748340.57	5947292.00
SV24	1748353.51	5947196.22	WM 41	1748334.85	5947256.12
SV25	1748353.02	5947195.66	WM 42	1748334.85	5947256.12
SV26	1748354.08	5947195.14			
SV27	1748341.74	5947188.25			
SV28	1748341.11	5947187.81			
SV29	1748317.02	5946971.51			
SV30	1748305.91	5946968.84			
SV31	1748305.91	5946952.04			
SV32	1748320.74	5946952.20			
SV33	1748320.98	5946951.04			
SV34	1748361.38	5946852.36			
SV35	1748362.27	5946852.02			
SV36	1748370.38	5946842.02			
SV37	1748371.52	5946840.23			
SV38	1748371.97	5946840.20			
SV39	1748370.96	5946841.99			
SV40	1748383.20	5947181.91			
SV41	1748750.20	5947813.94			
SV42	1748750.64	5947814.26			
SV43	1748750.46	5947813.43			
REDUCER					
RO1	1748590.87	5947849.16			
RO2	1748319.19	5946960.72			
FLOW METER					
FM01	1748725.72	5947816.41			



- NOTES**
- ALL WORK AND MATERIALS COMPLIES WITH AC STANDARD FOR ENGINEERING DESIGN AND CONSTRUCTION.
 - PIPE BEDDING COMPLIES WITH AC STD DETAIL DRAWING 18000 SHEET 4.4 UNLESS OTHERWISE NOTED.
 - WATERMANS ARE AN AVERAGE 0.6m BELOW GROUND IN BERMS AND 0.9m BELOW GROUND UNDER ROADS. HARDFILL BACKFILLED BENEATH ROAD CROSSINGS.
 - ALL PIPES ARE LAID 1.4m OFF THE ROAD RESERVE BOUNDARY IN THE COMMON SERVICE TRENCH.
 - PIPE SIZES SHOWN ARE EXTERNAL DIAMETER.
 - LOT BOUNDARIES ARE SUBJECT TO FINAL SURVEY.
 - ASBUILT DATA HAS BEEN SOURCED FROM A COMBINATION OF WOODS SURVEY MEASURED DATA AND CONTRACTOR RECEIVED DATA.

LEGEND

EXISTING WATERMAIN	—
HIGH PESSURE WATERMAIN	—
SLUICE VALVE	
PEET VALVE	
FIRE HYDRANT	
BLANK CAP	
STAGE BOUNDARY	

REVISION DETAILS	BY	DATE
1 ISSUED FOR INFORMATION	KR	04/02/19
2 RD02 & WM TO 1B BDY	JW	18/04/19

SURVEYED	WOODS	WOODS Ltd LEVEL 1 BUILDING B 8 NUGENT STREET, GRAFTON AUCKLAND 1023 09 308 9229 WOODS.CO.NZ
DESIGNED	JW	
DRAWN	KR	
CHECKED	NM	
APPROVED	JW	

MILLDALE
Connecting Lives

**MILLDALE
STAGE 1A
WATERMAIN
ASBUILT PLAN
SHEET 3 OF 5**

STATUS	ISSUED FOR INFORMATION	REV
SCALE	1 : 1000 @ A3	2
COUNCIL	AUCKLAND COUNCIL	
DWG NO	P16-270-01A-602-AB	

WATERCARE SERVICES LTD
Network As-Built Approval
As-built Number: 91822
Engineer: *Christian Santale*
Date: 24/04/2019

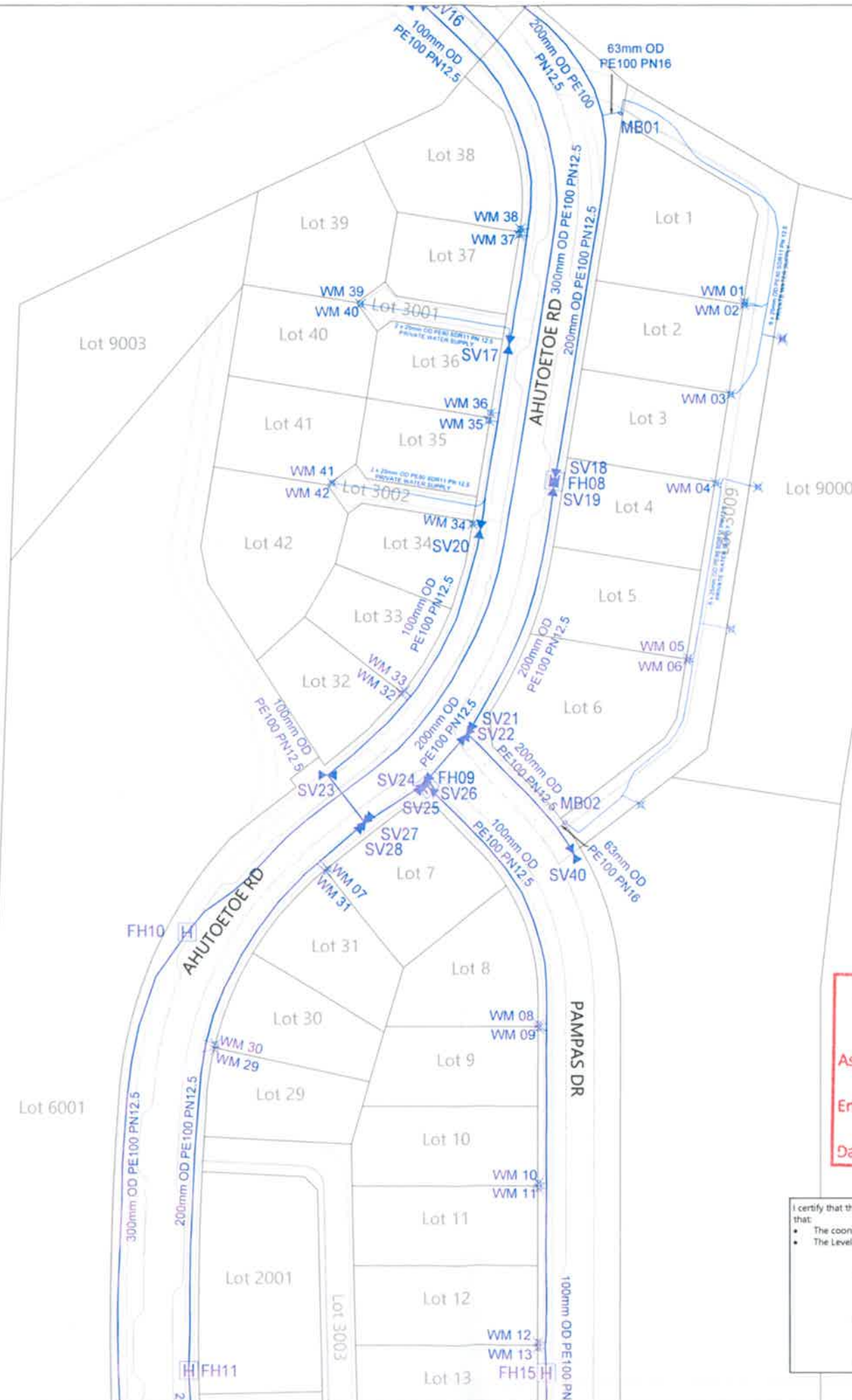
I certify that these As-built Plans are an accurate record of the works undertaken and that:

- The coordinates (X,Y) are in terms of NZTM on NZGD2000
- The Levels (Z) are in terms of Auckland Vertical Datum 1946 (MSL) LINZ datum

Signed: *J Whyte*
Registered Professional Surveyor
Date: 04/02/2019
Name: JAMIE WHYTE

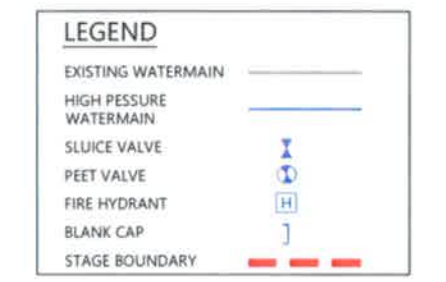


SCHEDULE OF COORDINATES		
NAME	EASTING	NORTHING
FIRE HYDRANTS		
FH01	1748568.51	5947840.20
FH02	1748726.45	5947819.20
FH03	1748511.22	5947678.81
FH04	1748451.24	5947558.30
FH05	1748438.99	5947540.65
FH06	1748390.59	5947439.52
FH07	1748360.57	5947362.45
FH08	1748379.37	5947256.58
FH09	1748353.60	5947195.59
FH10	1748305.80	5947166.17
FH11	1748306.16	5947078.22
FH12	1748320.86	5946951.67
FH13	1748361.75	5946852.09
FH14	1748387.18	5946958.44
FH15	1748377.71	5947077.74
SLUICE VALVES		
SV01	1748537.60	5947929.78
SV02	1748546.23	5947846.62
SV03	1748568.21	5947841.22
SV04	1748568.89	5947841.30
SV05	1748568.64	5947840.57
SV06	1748726.41	5947819.65
SV07	1748726.52	5947820.26
SV08	1748726.82	5947819.95
SV09	1748338.83	5947370.58
SV10	1748338.99	5947369.84
SV11	1748338.25	5947369.67
SV12	1748359.54	5947363.12
SV13	1748359.58	5947362.56
SV14	1745360.72	5947362.03
SV15	1748351.28	5947352.78
SV16	1748352.09	5947352.60
SV17	1748370.40	5947283.95
SV18	1748379.45	5947257.16
SV19	1748379.23	5947255.82
SV20	1748364.58	5947246.88
SV21	1748362.35	5947206.31
SV22	1748361.72	5947205.64
SV23	1748333.97	5947197.66
SV24	1748353.51	5947196.22
SV25	1748353.02	5947195.66
SV26	1748354.08	5947195.14
SV27	1748341.74	5947188.25
SV28	1748341.11	5947187.81
SV29	1748317.02	5946971.51
SV30	1748305.91	5946968.84
SV31	1748305.91	5946952.04
SV32	1748320.74	5946952.20
SV33	1748320.98	5946951.04
SV34	1748361.38	5946852.36
SV35	1748362.27	5946852.02
SV36	1748370.38	5946842.02
SV37	1748371.52	5946840.23
SV38	1748371.97	5946840.20
SV39	1748370.96	5946841.99
SV40	1748383.20	5947181.91
SV41	1748750.20	5947813.94
SV42	1748750.64	5947814.26
SV43	1748750.46	5947813.43
REDUCER		
R01	1748590.87	5947849.16
R02	1748319.19	5946960.72
FLOW METER		
FM01	1748725.72	5947816.41



Schedule of Coordinates		
Watermain Lot Connections		
WM 01	1748417.52	5947292.34
WM 02	1748417.45	5947291.75
WM 03	1748414.68	5947273.87
WM 04	1748411.66	5947256.11
WM 05	1748406.24	5947221.16
WM 06	1748405.95	5947220.55
WM 07	1748334.01	5947178.83
WM 08	1748376.16	5947147.74
WM 09	1748376.11	5947146.88
WM 10	1748376.10	5947115.89
WM 11	1748376.18	5947114.70
WM 12	1748376.02	5947083.92
WM 13	1748376.01	5947082.72
WM 14	1748375.91	5947051.79
WM 15	1748375.98	5947050.81
WM 16	1748378.97	5947009.87
WM 17	1748379.08	5947008.95
WM 18	1748383.01	5946978.12
WM 19	1748383.16	5946977.16
WM 20	1748386.76	5946946.37
WM 21	1748386.93	5946945.45
WM 22	1748391.26	5946913.76
WM 23	1748391.24	5946912.99
WM 24	1748384.62	5946874.09
WM 25	1748347.94	5946872.73
WM 26	1748347.54	5946873.59
WM 27	1748313.66	5947004.10
WM 28	1748313.70	5947005.67
WM 29	1748311.48	5947142.61
WM 30	1748311.52	5947143.73
WM 31	1748333.62	5947178.26
WM 32	1748348.60	5947213.99
WM 33	1748349.33	5947214.53
WM 34	1748363.05	5947247.98
WM 35	1748366.28	5947268.75
WM 36	1748366.60	5947270.28
WM 37	1748372.39	5947305.92
WM 38	1748372.60	5947307.13
WM 39	1748340.57	5947292.00
WM 40	1748340.57	5947292.00
WM 41	1748334.85	5947256.12
WM 42	1748334.85	5947256.12

- NOTES**
- ALL WORK AND MATERIALS COMPLIES WITH AC STANDARD FOR ENGINEERING DESIGN AND CONSTRUCTION.
 - PIPE BEDDING COMPLIES WITH AC STD DETAIL DRAWING 18000 SHEET 4.4 UNLESS OTHERWISE NOTED.
 - WATERMANS ARE AN AVERAGE 0.6m BELOW GROUND IN BERMS AND 0.9m BELOW GROUND UNDER ROADS. HARDFILL BACKFILLED BENEATH ROAD CROSSINGS.
 - ALL PIPES ARE LAID 1.4m OFF THE ROAD RESERVE BOUNDARY IN THE COMMON SERVICE TRENCH.
 - PIPE SIZES SHOWN ARE EXTERNAL DIAMETER.
 - LOT BOUNDARIES ARE SUBJECT TO FINAL SURVEY.
 - ASBUILT DATA HAS BEEN SOURCED FROM A COMBINATION OF WOODS SURVEY MEASURED DATA AND CONTRACTOR RECEIVED DATA.



REVISION DETAILS	BY	DATE
1 ISSUED FOR INFORMATION	KR	04/02/19
2 RD02 & WM TO 1B BDY	JW	18/04/19

SURVEYED	WOODS	WOODS Ltd
DESIGNED	JW	LEVEL 1 BUILDING B 8 NUGENT STREET, GRAFTON AUCKLAND 1023
DRAWN	KR	09 308 9229
CHECKED	NM	
APPROVED	JW	WOODS.CO.NZ



**MILLDALE
STAGE 1A
WATERMAIN
ASBUILT PLAN
SHEET 4 OF 5**

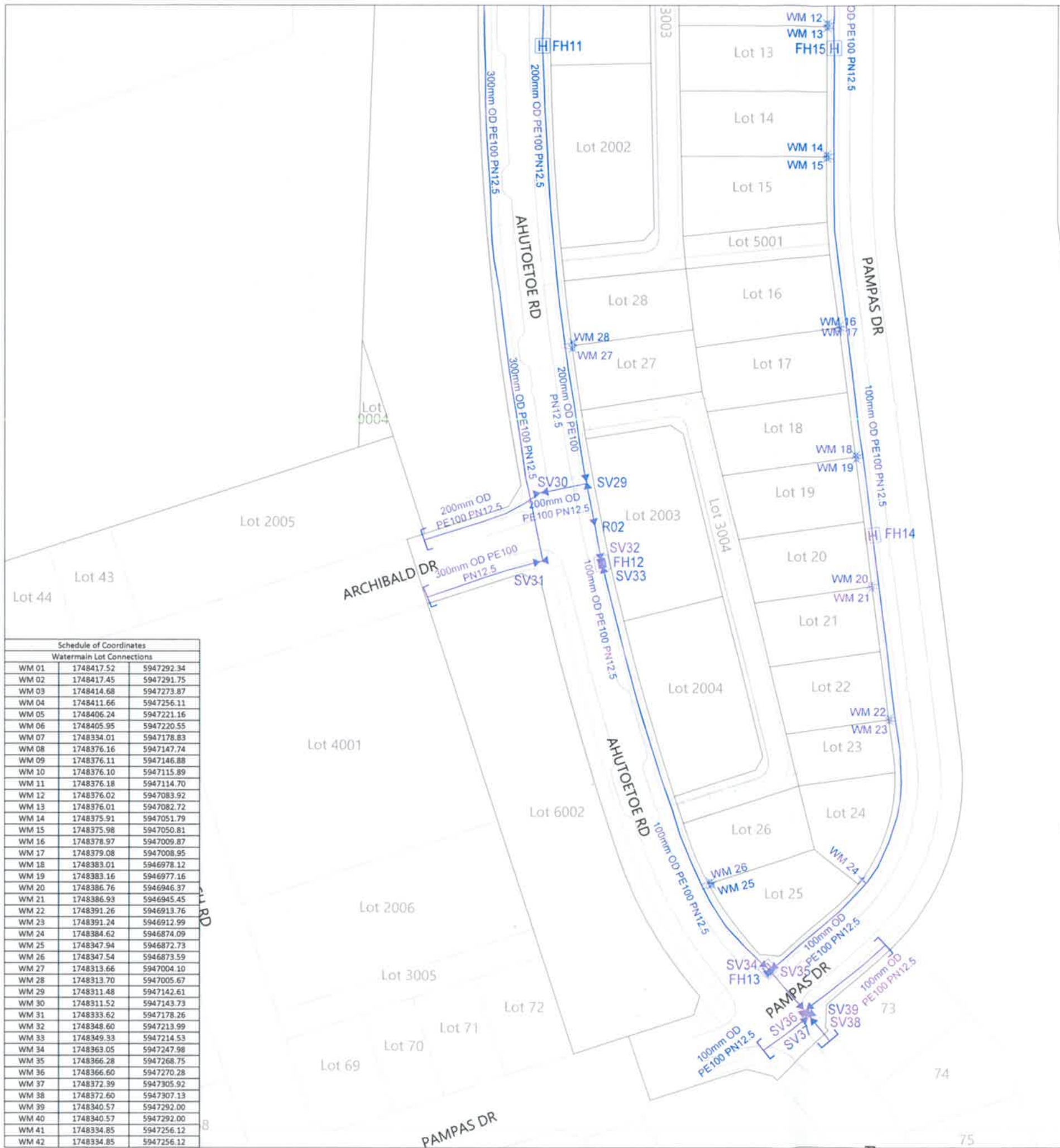
WATERCARE SERVICES LTD
Network As-Built Approval
As-built Number: 91822
Engineer: Christian Santolucito
Date: 15/04/2019

I certify that these As-built Plans are an accurate record of the works undertaken and that:

- The coordinates (X,Y) are in terms of NZTM on NZGD2000
- The Levels (Z) are in terms of Auckland Vertical Datum 1946 (MSL) LINZ datum

Signed: Jamie Whyte
Registered Professional Surveyor
Date: 04/02/2019
Name: JAMIE WHYTE

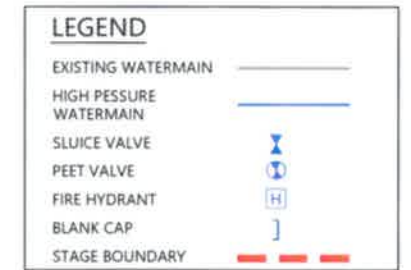
STATUS	ISSUED FOR INFORMATION	REV
SCALE	1 : 1000 @ A3	2
COUNCIL	AUCKLAND COUNCIL	
DWG NO	P16-270-01A-603-AB	



NORTHERN MO

SCHEDULE OF COORDINATES		
NAME	EASTING	NORTHING
FIRE HYDRANTS		
FH01	1748568.51	5947840.20
FH02	1748726.45	5947819.20
FH03	1748511.22	5947678.81
FH04	1748451.24	5947558.30
FH05	1748438.99	5947540.65
FH06	1748390.59	5947439.52
FH07	1748360.57	5947362.45
FH08	1748379.37	5947256.58
FH09	1748353.60	5947195.59
FH10	1748305.80	5947166.17
FH11	1748306.16	5947078.22
FH12	1748320.86	5946951.67
FH13	1748361.75	5946852.09
FH14	1748387.18	5946958.44
FH15	1748377.71	5947077.74
SLUICE VALVES		
SV01	1748537.60	5947929.78
SV02	1748546.23	5947846.62
SV03	1748568.21	5947841.22
SV04	1748568.89	5947841.30
SV05	1748568.64	5947840.57
SV06	1748726.41	5947819.65
SV07	1748726.52	5947820.26
SV08	1748726.82	5947819.95
SV09	1748338.83	5947370.58
SV10	1748338.99	5947369.84
SV11	1748338.25	5947369.67
SV12	1748359.54	5947363.12
SV13	1748359.58	5947362.56
SV14	1745360.72	5947362.03
SV15	1748351.28	5947352.78
SV16	1748352.09	5947352.60
SV17	1748370.40	5947283.95
SV18	1748379.45	5947257.16
SV19	1748379.23	5947255.82
SV20	1748364.58	5947246.88
SV21	1748362.35	5947206.31
SV22	1748361.72	5947205.64
SV23	1748333.97	5947197.66
SV24	1748353.51	5947196.22
SV25	1748353.02	5947195.66
SV26	1748354.08	5947195.14
SV27	1748341.74	5947188.25
SV28	1748341.11	5947187.81
SV29	1748317.02	5946971.51
SV30	1748305.91	5946968.84
SV31	1748305.91	5946952.04
SV32	1748320.74	5946952.20
SV33	1748320.98	5946951.04
SV34	1748361.38	5946852.36
SV35	1748362.27	5946852.02
SV36	1748370.38	5946842.02
SV37	1748371.52	5946840.23
SV38	1748371.97	5946840.20
SV39	1748370.96	5946841.99
SV40	1748383.20	5947181.91
SV41	1748750.20	5947813.94
SV42	1748750.64	5947814.26
SV43	1748750.46	5947813.43
REDUCER		
R01	1748590.87	5947849.16
R02	1748319.19	5946960.72
FLOW METER		
FM01	1748725.72	5947816.41

- NOTES**
- ALL WORK AND MATERIALS COMPLIES WITH AC STANDARD FOR ENGINEERING DESIGN AND CONSTRUCTION
 - PIPE BEDDING COMPLIES WITH AC STD DETAIL DRAWING 18000 SHEET 4 4 UNLESS OTHERWISE NOTED
 - WATERMANS ARE AN AVERAGE 0.6m BELOW GROUND IN BERMS AND 0.9m BELOW GROUND UNDER ROADS. HARDFILL BACKFILLED BENEATH ROAD CROSSINGS
 - ALL PIPES ARE LAID 1.4m OFF THE ROAD RESERVE BOUNDARY IN THE COMMON SERVICE TRENCH
 - PIPE SIZES SHOWN ARE EXTERNAL DIAMETER
 - LOT BOUNDARIES ARE SUBJECT TO FINAL SURVEY
 - ASBUILT DATA HAS BEEN SOURCED FROM A COMBINATION OF WOODS SURVEY MEASURED DATA AND CONTRACTOR RECEIVED DATA.



Schedule of Coordinates		
Watermain Lot Connections		
WM 01	1748417.52	5947292.34
WM 02	1748417.45	5947291.75
WM 03	1748414.68	5947273.87
WM 04	1748411.66	5947256.11
WM 05	1748406.24	5947221.16
WM 06	1748405.95	5947220.55
WM 07	1748334.01	5947178.83
WM 08	1748376.16	5947147.74
WM 09	1748376.11	5947146.88
WM 10	1748376.10	5947115.89
WM 11	1748376.18	5947114.70
WM 12	1748376.02	5947083.92
WM 13	1748376.01	5947082.72
WM 14	1748375.91	5947051.79
WM 15	1748375.98	5947050.81
WM 16	1748378.97	5947009.87
WM 17	1748379.08	5947008.95
WM 18	1748383.01	5946978.12
WM 19	1748383.16	5946977.16
WM 20	1748386.76	5946946.37
WM 21	1748386.93	5946945.45
WM 22	1748391.26	5946913.76
WM 23	1748391.24	5946912.99
WM 24	1748384.62	5946874.09
WM 25	1748347.94	5946872.73
WM 26	1748347.54	5946873.59
WM 27	1748313.66	5947004.10
WM 28	1748313.70	5947005.67
WM 29	1748311.48	5947142.61
WM 30	1748311.52	5947143.73
WM 31	1748333.62	5947178.26
WM 32	1748348.60	5947213.99
WM 33	1748349.33	5947214.53
WM 34	1748363.05	5947247.98
WM 35	1748366.28	5947268.75
WM 36	1748366.60	5947270.28
WM 37	1748372.39	5947305.92
WM 38	1748372.60	5947307.13
WM 39	1748340.57	5947292.00
WM 40	1748340.57	5947292.00
WM 41	1748334.85	5947256.12
WM 42	1748334.85	5947256.12

WATERCARE SERVICES LTD
Network As-Built Approval
 As-built Number: 24/04/2019
 Engineer: Christian Sanfote
 Date: 24/04/2019

I certify that these As-built Plans are an accurate record of the works undertaken and that:
 • The coordinates (X,Y) are in terms of NZTM on NZGD2000
 • The Levels (Z) are in terms of Auckland Vertical Datum 1946 (MSL) UNZ datum

Signed: *J Whyte*
 Registered Professional Surveyor

Date: 04/02/2019

Name: JAMIE WHYTE

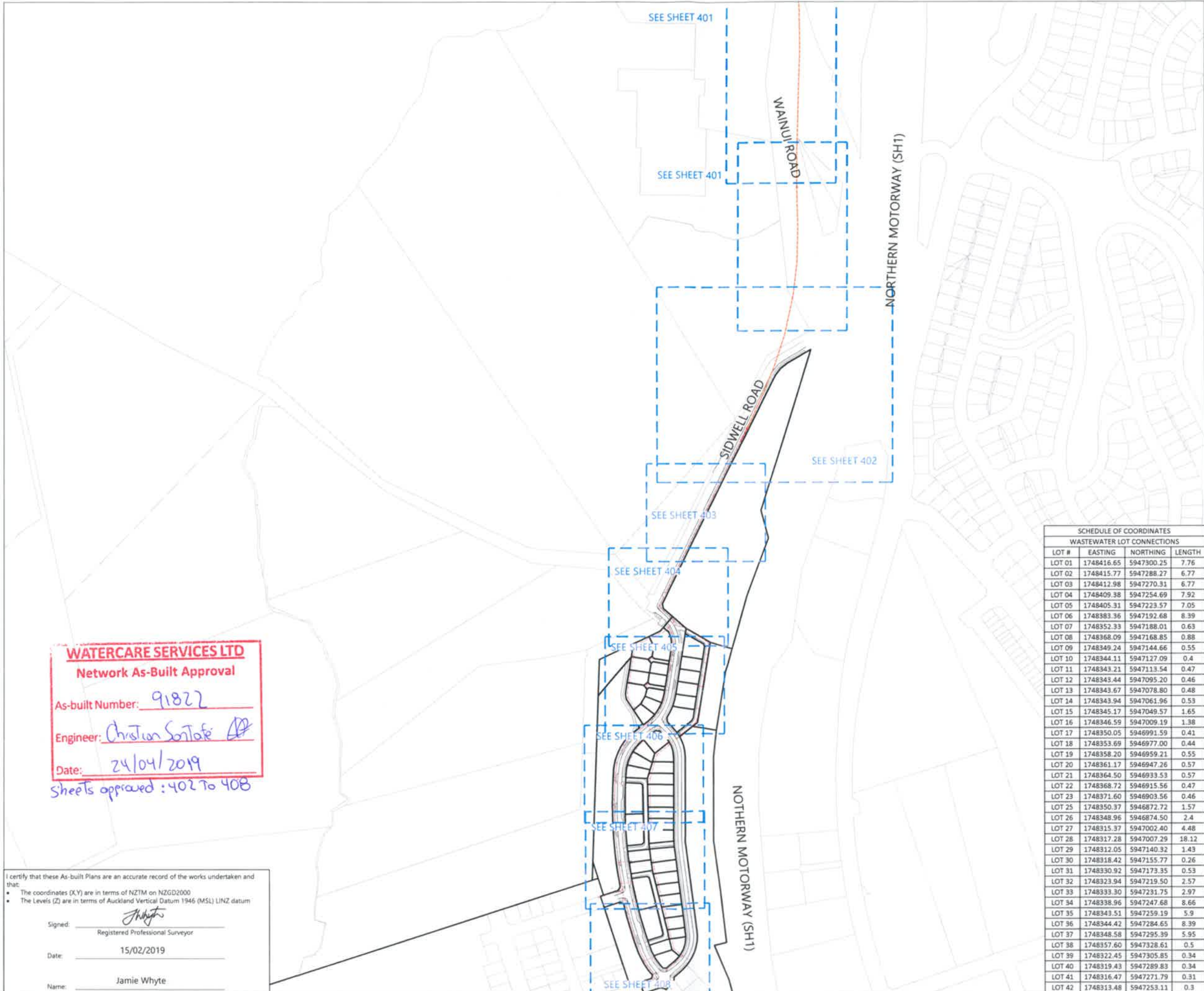
REVISION DETAILS	BY	DATE
1 ISSUED FOR INFORMATION	KR	04/02/19
2 RD02 & WM TO 1B BDY	JW	18/04/19

SURVEYED	WOODS	WOODS Ltd LEVEL 1 BUILDING B 8 NUGENT STREET, GRAFTON AUCKLAND 1023 09 308 9229 WOODS.CO.NZ
DESIGNED	JW	
DRAWN	KR	
CHECKED	NM	
APPROVED	JW	



MILLDALE
STAGE 1A
WATERMAIN
ASBUILT PLAN
SHEET 5 OF 5

STATUS	ISSUED FOR INFORMATION	REV
SCALE	1 : 1000 @ A3	2
COUNCIL	AUCKLAND COUNCIL	
DWG NO	P16-270-01A-604-AB	



LEGEND

NEW SANITARY SEWER MANHOLE	
NEW SANITARY SEWER	
EXISTING SANITARY SEWER	
STAGE BOUNDARY	
SANITARY SEWER TO VEST WITH FUTURE APPLICATION	

- NOTES**
1. ALL WORKS AND MATERIALS COMPLY WITH AUCKLAND COUNCIL & WATERCARE SERVICES LTD STANDARDS FOR ENGINEERING DESIGN AND CONSTRUCTION.
 2. ALL SANITARY SEWER LINES ARE 150mmØ uPVC CLASS SN16 UNLESS STATED OTHERWISE.
 3. ALL PIPE BEDDING COMPLIES WITH WATERCARE STANDARDS.
 4. ALL PIPE CROSSINGS UNDER ROADS AND ACCESSWAYS HAVE BEEN HARDFILL BACKFILLED.
 5. ALL PRIVATE LOT CONNECTIONS ARE 100mmØ
 6. LOT BOUNDARIES ARE SUBJECT TO FINAL SURVEY.
 7. ALL PIPE AND MH DIAMETERS ARE INTERNAL, AND SHOWN IN MILLIMETERS UNLESS OTHERWISE SPECIFIED.
 8. ASBUILT DATA HAS BEEN SOURCED FROM A COMBINATION OF WOODS SURVEY MEASURED DATA AND CONTRACTOR RECEIVED DATA.

SCHEDULE OF COORDINATES

WASTEWATER LOT CONNECTIONS			
LOT #	EASTING	NORTHING	LENGTH
LOT 01	1748416.65	5947300.25	7.76
LOT 02	1748415.77	5947288.27	6.77
LOT 03	1748412.98	5947270.31	6.77
LOT 04	1748409.38	5947254.69	7.92
LOT 05	1748405.31	5947223.57	7.05
LOT 06	1748383.36	5947192.68	8.39
LOT 07	1748352.33	5947188.01	0.63
LOT 08	1748368.09	5947168.85	0.88
LOT 09	1748349.24	5947144.66	0.55
LOT 10	1748344.11	5947127.09	0.4
LOT 11	1748343.21	5947113.54	0.47
LOT 12	1748343.44	5947095.20	0.46
LOT 13	1748343.67	5947078.80	0.48
LOT 14	1748343.94	5947061.96	0.53
LOT 15	1748345.17	5947049.57	1.65
LOT 16	1748346.59	5947009.19	1.38
LOT 17	1748350.05	5946991.59	0.41
LOT 18	1748353.69	5946977.00	0.44
LOT 19	1748358.20	5946959.21	0.55
LOT 20	1748361.17	5946947.26	0.57
LOT 21	1748364.50	5946933.53	0.57
LOT 22	1748368.72	5946915.56	0.47
LOT 23	1748371.60	5946903.56	0.46
LOT 25	1748350.37	5946872.72	1.57
LOT 26	1748348.96	5946874.50	2.4
LOT 27	1748315.37	5947002.40	4.48
LOT 28	1748317.28	5947007.29	18.12
LOT 29	1748312.05	5947140.32	1.43
LOT 30	1748318.42	5947155.77	0.26
LOT 31	1748330.92	5947173.35	0.53
LOT 32	1748323.94	5947219.50	2.57
LOT 33	1748333.30	5947231.75	2.97
LOT 34	1748338.96	5947247.68	8.66
LOT 35	1748343.51	5947259.19	5.9
LOT 36	1748344.42	5947284.65	8.39
LOT 37	1748348.58	5947295.39	5.95
LOT 38	1748357.60	5947328.61	0.5
LOT 39	1748322.45	5947305.85	0.34
LOT 40	1748319.43	5947289.83	0.34
LOT 41	1748316.47	5947271.79	0.31
LOT 42	1748313.48	5947253.11	0.3

REVISION DETAILS

NO	DESCRIPTION	BY	DATE
1	ISSUED FOR INFORMATION	KR	05/02/19
2	TR/1-TR/9 AMENDMENTS	KR	15/02/19

SURVEYED	WOODS	WOODS Ltd LEVEL 1 BUILDING B 8 NUGENT STREET, GRAFTON AUCKLAND 1023 09 308 9229 WOODS.CO.NZ
DESIGNED	JW	
DRAWN	KR	
CHECKED	NM	
APPROVED	JW	



**MILLDALE
STAGE 1A
WASTEWATER
ASBUILT PLAN
SHEET 1 OF 9**

STATUS	ISSUED FOR INFORMATION	REV
SCALE	1:5000 @ A3	2
COUNCIL	AUCKLAND COUNCIL	
DWG NO	P16-270-01A-400-AB	

WATERCARE SERVICES LTD
Network As-Built Approval
 As-built Number: 91822
 Engineer: Christian Sotofe
 Date: 24/04/2019
 Sheets approved: 402 To 408

I certify that these As-built Plans are an accurate record of the works undertaken and that:

- The coordinates (X,Y) are in terms of NZTM on NZGD2000
- The Levels (Z) are in terms of Auckland Vertical Datum 1946 (MSL) LINZ datum

Signed: J Whyte
 Registered Professional Surveyor
 Date: 15/02/2019
 Name: Jamie Whyte

SANITARY SEWER LINE FROM TR/1 TO TR/9 SHOWN FOR INFORMATION PURPOSES ONLY AND IS TO VEST WITH FUTURE APPLICATION FOLLOWING COMPLETION OF WORKS.

SSMH TR/5

WAINUI ROAD

SIDWELL RD

Lot 9002

SSMH TR/9
MH1540mm
LL = 19.21
1748480.85mE
5947618.75mN

4500 (OUTSIDE DIAMETER)
THRUSTED LINE MDPE
AS TRACKED DURING PILOT DRILL


351.8m

15.11

15.12

I certify that these As-built Plans are an accurate record of the works undertaken and that:

- The coordinates (X,Y) are in terms of NZTM on NZGD2000
- The Levels (Z) are in terms of Auckland Vertical Datum 1946 (MSL) LINZ datum

Signed: 
Registered Professional Surveyor

Date: 24/04/2019

Name: Jamie Whyte

WATERCARE SERVICES LTD
Network As-Built Approval






As-built Number: 91822

Engineer: 

Date: 24/04/2019



LEGEND

NEW SANITARY SEWER MANHOLE	
NEW SANITARY SEWER	
EXISTING SANITARY SEWER	
STAGE BOUNDARY	
SANITARY SEWER TO VEST WITH FUTURE APPLICATION	

- NOTES**
- ALL WORKS AND MATERIALS COMPLY WITH AUCKLAND COUNCIL & WATERCARE SERVICES LTD STANDARDS FOR ENGINEERING DESIGN AND CONSTRUCTION.
 - ALL SANITARY SEWER LINES ARE 150mmØ uPVC CLASS SN16 UNLESS STATED OTHERWISE.
 - ALL PIPE BEDDING COMPLIES WITH WATERCARE STANDARDS.
 - ALL PIPE CROSSINGS UNDER ROADS AND ACCESSWAYS HAVE BEEN HARDFILL BACKFILLED.
 - ALL PRIVATE LOT CONNECTIONS ARE 100mmØ
 - LOT BOUNDARIES ARE SUBJECT TO FINAL SURVEY.
 - ALL PIPE AND MH DIAMETERS ARE INTERNAL, AND SHOWN IN MILLIMETERS UNLESS OTHERWISE SPECIFIED.
 - ASBUILT DATA HAS BEEN SOURCED FROM A COMBINATION OF WOODS SURVEY MEASURED DATA AND CONTRACTOR RECEIVED DATA.

REVISION DETAILS	BY	DATE
1 ISSUED FOR INFORMATION	KR	5/02/2018
2 TR/1-TR/9 AMENDMENTS	KR	15/02/19
3 UPDATED CHAMBER DIA.	JW	24/04/19

SURVEYED	WOODS	WOODS Ltd LEVEL 1 BUILDING B 8 NUGENT STREET, GRAFTON AUCKLAND 1023 09 308 9229 WOODS.CO.NZ
DESIGNED	JW	
DRAWN	KR	
CHECKED	NM	
APPROVED	JW	



MILLDALE
STAGE 1A
WASTEWATER
ASBUILT PLAN
SHEET 3 OF 9

STATUS	ISSUED FOR INFORMATION	REV
SCALE	1:1000 @ A3	3
COUNCIL	AUCKLAND COUNCIL	
DWG NO	P16-270-01A-402-AB	



I certify that these As-built Plans are an accurate record of the works undertaken and that:

- The coordinates (X,Y) are in terms of NZTM on NZGD2000
- The Levels (Z) are in terms of Auckland Vertical Datum 1946 (MSL) LINZ datum

Signed: *J Whyte*
Registered Professional Surveyor

Date: 24/04/2019

Name: Jamie Whyte

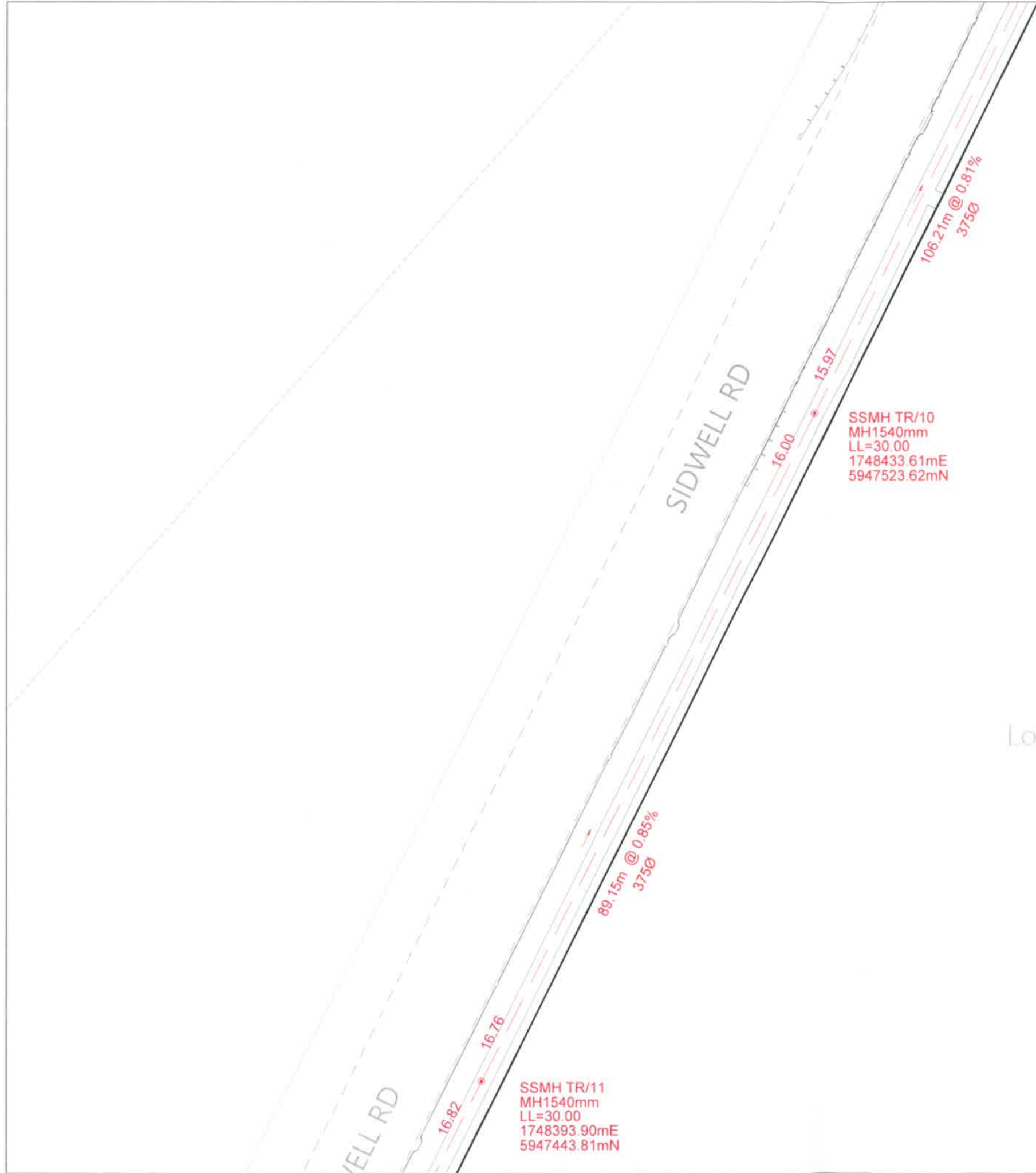
WATERCARE SERVICES LTD
Network As-Built Approval

As-built Number: 91022
Engineer: *Christian Santolucito*
Date: 24/04/2019

LEGEND

NEW SANITARY SEWER MANHOLE	
NEW SANITARY SEWER	
EXISTING SANITARY SEWER	
STAGE BOUNDARY	
SANITARY SEWER TO VEST WITH FUTURE APPLICATION	

- NOTES**
- ALL WORKS AND MATERIALS COMPLY WITH AUCKLAND COUNCIL & WATERCARE SERVICES LTD STANDARDS FOR ENGINEERING DESIGN AND CONSTRUCTION.
 - ALL SANITARY SEWER LINES ARE 150mmØ uPVC CLASS SN16 UNLESS STATED OTHERWISE.
 - ALL PIPE BEDDING COMPLIES WITH WATERCARE STANDARDS.
 - ALL PIPE CROSSINGS UNDER ROADS AND ACCESSWAYS HAVE BEEN HARDFILL BACKFILLED.
 - ALL PRIVATE LOT CONNECTIONS ARE 100mmØ.
 - LOT BOUNDARIES ARE SUBJECT TO FINAL SURVEY.
 - ALL PIPE AND MH DIAMETERS ARE INTERNAL, AND SHOWN IN MILLIMETERS UNLESS OTHERWISE SPECIFIED.
 - ASBUILT DATA HAS BEEN SOURCED FROM A COMBINATION OF WOODS SURVEY MEASURED DATA AND CONTRACTOR RECEIVED DATA.



Lot 9002

SCHEDULE OF COORDINATES

LOT #	EASTING	NORTHING	LENGTH
LOT 01	1748416.65	5947300.25	7.76
LOT 02	1748415.77	5947288.27	6.77
LOT 03	1748412.98	5947270.31	6.77
LOT 04	1748409.38	5947254.69	7.92
LOT 05	1748405.31	5947223.57	7.05
LOT 06	1748383.36	5947192.68	8.39
LOT 07	1748352.33	5947188.01	0.63
LOT 08	1748368.09	5947168.85	0.88
LOT 09	1748349.24	5947144.66	0.55
LOT 10	1748344.11	5947127.09	0.4
LOT 11	1748343.21	5947113.54	0.47
LOT 12	1748343.44	5947095.20	0.46
LOT 13	1748343.67	5947078.80	0.48
LOT 14	1748343.94	5947061.96	0.53
LOT 15	1748345.17	5947049.57	1.65
LOT 16	1748346.59	5947009.19	1.38
LOT 17	1748350.05	5946991.59	0.41
LOT 18	1748353.69	5946977.00	0.44
LOT 19	1748358.20	5946959.21	0.55
LOT 20	1748361.17	5946947.26	0.57
LOT 21	1748364.50	5946933.53	0.57
LOT 22	1748368.72	5946915.56	0.47
LOT 23	1748371.60	5946903.56	0.46
LOT 25	1748350.37	5946872.72	1.57
LOT 26	1748348.96	5946874.50	2.4
LOT 27	1748315.37	5947002.40	4.48
LOT 28	1748317.28	5947007.29	18.12
LOT 29	1748312.05	5947140.32	1.43
LOT 30	1748318.42	5947155.77	0.26
LOT 31	1748330.92	5947173.35	0.53
LOT 32	1748323.94	5947219.50	2.57
LOT 33	1748333.30	5947231.75	2.97
LOT 34	1748338.96	5947247.68	8.66
LOT 35	1748343.51	5947259.19	5.9
LOT 36	1748344.42	5947284.65	8.39
LOT 37	1748348.58	5947295.39	5.95
LOT 38	1748357.60	5947328.61	0.5
LOT 39	1748322.45	5947305.85	0.34
LOT 40	1748319.43	5947289.83	0.34
LOT 41	1748316.47	5947271.79	0.31
LOT 42	1748313.48	5947253.11	0.3

REVISION DETAILS

NO	DESCRIPTION	BY	DATE
1	ISSUED FOR INFORMATION	KR	5/02/2019
2	UPDATED CHAMBER DIA.	JW	24/04/19

SURVEYED	WOODS	WOODS Ltd LEVEL 1 BUILDING 8 8 NUGENT STREET, GRAFTON AUCKLAND 1023 09 308 9229 WOODS.CO.NZ
DESIGNED	JW	
DRAWN	KR	
CHECKED	NM	
APPROVED	JW	



MILLDALE
STAGE 1A
WASTEWATER
ASBUILT PLAN
SHEET 4 OF 9

STATUS	ISSUED FOR INFORMATION	REV
SCALE	1:500 @ A3	2
COUNCIL	AUCKLAND COUNCIL	
DWG NO	P16-270-01A-403-AB	

I certify that these As-built Plans are an accurate record of the works undertaken and that:

- The coordinates (X,Y) are in terms of NZTM on NZGD2000
- The Levels (Z) are in terms of Auckland Vertical Datum 1946 (MSL) LINZ datum

Signed: *J Whyte*
Registered Professional Surveyor

Date: 24/04/2019

Name: Jamie Whyte

WATERCARE SERVICES LTD
Network As-Built Approval

As-built Number: 91822

Engineer: *Christian Santafe*

Date: 24/04/2019

SCHEDULE OF COORDINATES			
WASTEWATER LOT CONNECTIONS			
LOT #	EASTING	NORTHING	LENGTH
LOT 01	1748416.65	5947300.25	7.76
LOT 02	1748415.77	5947288.27	6.77
LOT 03	1748412.98	5947270.31	6.77
LOT 04	1748409.38	5947254.69	7.92
LOT 05	1748405.31	5947223.57	7.05
LOT 06	1748383.36	5947192.68	8.39
LOT 07	1748352.33	5947188.01	0.63
LOT 08	1748368.09	5947168.85	0.88
LOT 09	1748349.24	5947144.66	0.55
LOT 10	1748344.11	5947127.09	0.4
LOT 11	1748343.21	5947113.54	0.47
LOT 12	1748343.44	5947095.20	0.46
LOT 13	1748343.67	5947078.80	0.48
LOT 14	1748343.94	5947061.96	0.53
LOT 15	1748345.17	5947049.57	1.65
LOT 16	1748346.59	5947009.19	1.38
LOT 17	1748350.05	5946991.59	0.41
LOT 18	1748353.69	5946977.00	0.44
LOT 19	1748358.20	5946959.21	0.55
LOT 20	1748361.17	5946947.26	0.57
LOT 21	1748364.50	5946933.53	0.57
LOT 22	1748368.72	5946915.56	0.47
LOT 23	1748371.60	5946903.56	0.46
LOT 25	1748350.37	5946872.72	1.57
LOT 26	1748348.96	5946874.50	2.4
LOT 27	1748315.37	5947002.40	4.48
LOT 28	1748317.28	5947007.29	18.12
LOT 29	1748312.05	5947140.32	1.43
LOT 30	1748318.42	5947155.77	0.26
LOT 31	1748330.92	5947173.35	0.53
LOT 32	1748323.94	5947219.50	2.57
LOT 33	1748333.30	5947231.75	2.97
LOT 34	1748338.96	5947247.68	8.66
LOT 35	1748343.51	5947259.19	5.9
LOT 36	1748344.42	5947284.65	8.39
LOT 37	1748348.58	5947295.39	5.95
LOT 38	1748357.60	5947328.61	0.5
LOT 39	1748322.45	5947305.85	0.34
LOT 40	1748319.43	5947289.83	0.34
LOT 41	1748316.47	5947271.79	0.31
LOT 42	1748313.48	5947253.11	0.3



LEGEND

- NEW SANITARY SEWER MANHOLE:
- NEW SANITARY SEWER:
- EXISTING SANITARY SEWER:
- STAGE BOUNDARY:
- SANITARY SEWER TO VEST WITH FUTURE APPLICATION:

- NOTES**
- ALL WORKS AND MATERIALS COMPLY WITH AUCKLAND COUNCIL & WATERCARE SERVICES LTD STANDARDS FOR ENGINEERING DESIGN AND CONSTRUCTION.
 - ALL SANITARY SEWER LINES ARE 150mmØ uPVC CLASS SN16 UNLESS STATED OTHERWISE.
 - ALL PIPE BEDDING COMPLIES WITH WATERCARE STANDARDS.
 - ALL PIPE CROSSINGS UNDER ROADS AND ACCESSWAYS HAVE BEEN HARDFILL BACKFILLED.
 - ALL PRIVATE LOT CONNECTIONS ARE 100mmØ.
 - LOT BOUNDARIES ARE SUBJECT TO FINAL SURVEY.
 - ALL PIPE AND MH DIAMETERS ARE INTERNAL AND SHOWN IN MILLIMETERS UNLESS OTHERWISE SPECIFIED.
 - ASBUILT DATA HAS BEEN SOURCED FROM A COMBINATION OF WOODS SURVEY MEASURED DATA AND CONTRACTOR RECEIVED DATA.

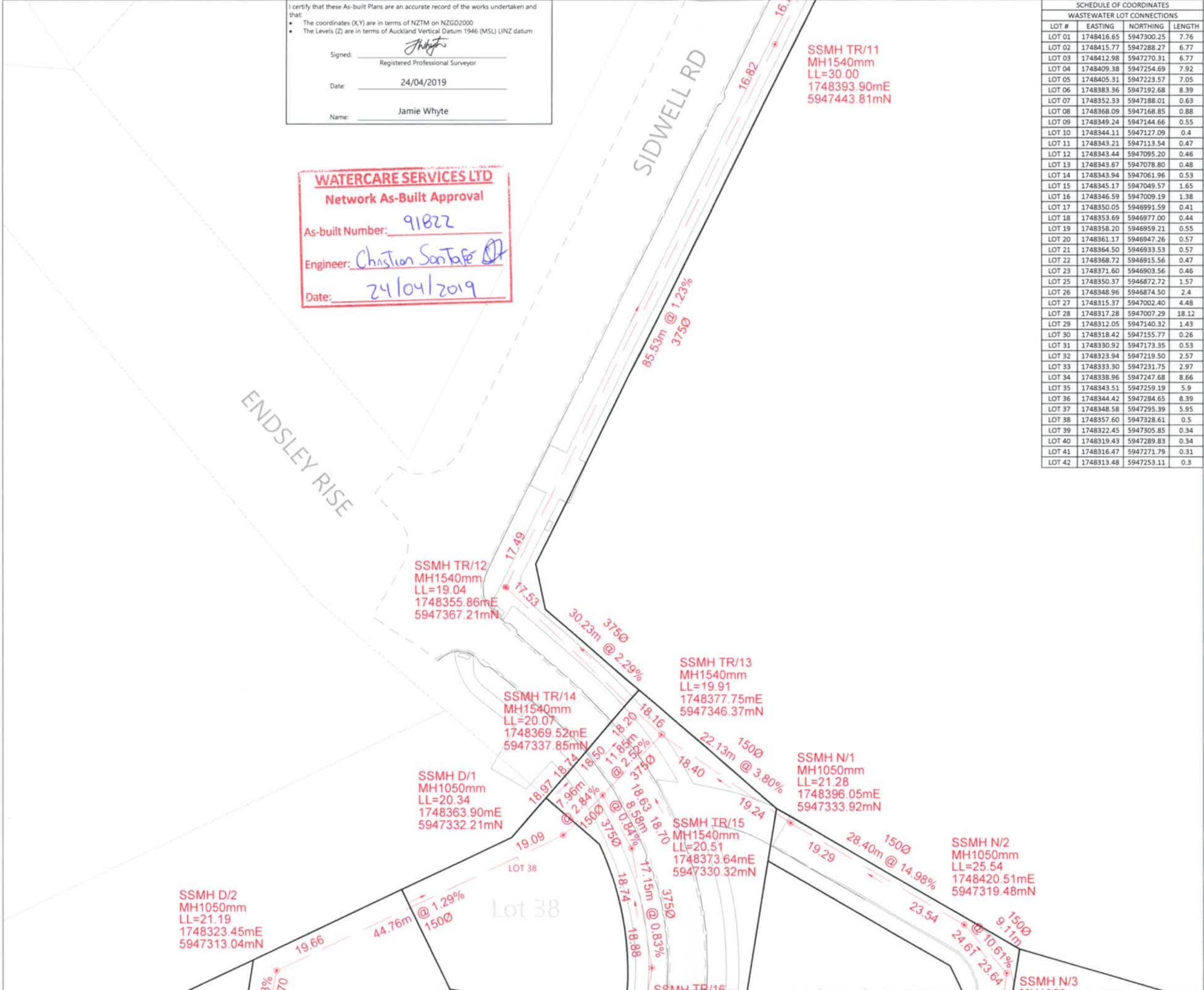
REVISION DETAILS		BY	DATE
1	ISSUED FOR INFORMATION	KR	5/02/2019
2	UPDATED CHAMBER DIA.	JW	24/04/19

SURVEYED	WOODS	WOODS Ltd LEVEL 1 BUILDING B 8 NUGENT STREET, GRAFTON AUCKLAND 1023 09 308 9229 WOODS.CO.NZ
DESIGNED	JW	
DRAWN	KR	
CHECKED	NM	
APPROVED	JW	



MILLDALE
STAGE 1A
WASTEWATER
ASBUILT PLAN
SHEET 5 OF 9

STATUS	ISSUED FOR INFORMATION	REV
SCALE	1:500 @ A3	2
COUNCIL	AUCKLAND COUNCIL	
DWG NO	P16-270-01A-404-AB	



WATERCARE SERVICES LTD

Network As-Built Approval

As-built Number: 91822

Engineer: Christon Santos

Date: 24/04/2019

SSMH D/2
MH1050mm
LL=21.19
1748323.45mE
5947313.04mN

SSMH D/3
MH1050mm
LL=21.82
1748320.23mE
5947297.07mN

SSMH D/4
MH1050mm
LL=21.85
1748314.22mE
5947260.44mN

SSMH D/5
MH1050mm
LL=21.80
1748311.80mE
5947245.03mN

SSMH D/6
MH1050mm
LL=21.98
1748312.72mE
5947238.16mN

SSMH D/7
MH1050mm
LL=22.31
1748322.75mE
5947221.79mN

SSMH B/1
MH1050mm
LL=22.38
1748343.01mE
5947292.86mN

SSMH C/1
MH1050mm
LL=22.45
1748338.29mE
5947256.22mN

SSMH D/8
MH1050mm
LL=22.57
1748331.16mE
5947229.64mN

SSMH TR/20
MH1540mm
LL=22.88
1748339.93mE
5947201.30mN

SSMH F/1
MH1050mm
LL=22.88
1748355.15mE
5947189.70mN

SSMH F/2
MH1050mm
LL=23.30
1748364.44mE

SSMH TR/16
MH1540mm
LL=21.90
1748376.38mE
5947313.40mN

SSMH TR/17
MH1540mm
LL=23.38
1748369.74mE
5947275.49mN

SSMH TR/18
MH1540mm
LL=23.11
1748362.82mE
5947236.21mN

SSMH TR/19
MH1540mm
LL=22.73
1748355.26mE
5947217.32mN

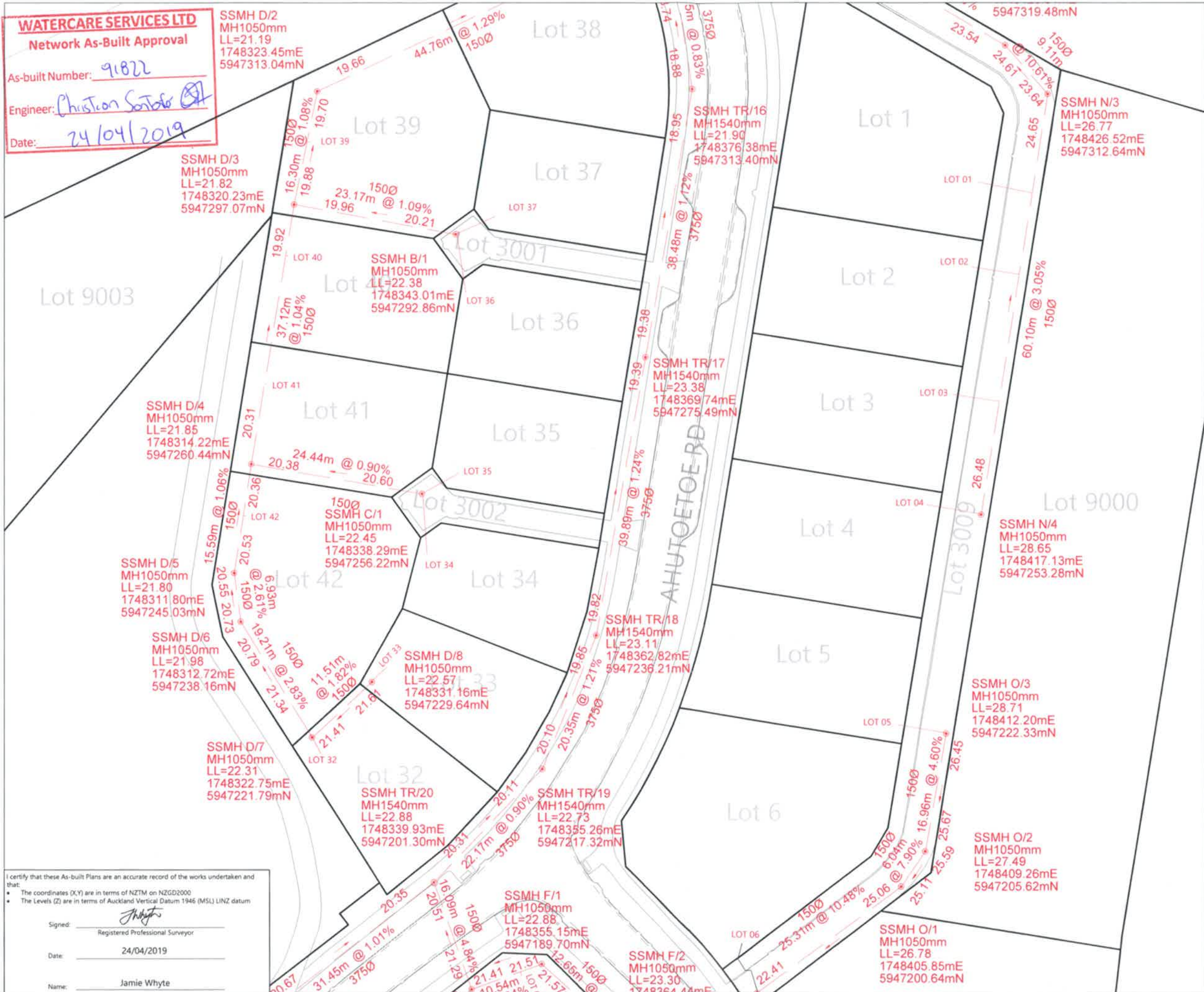
SSMH N/3
MH1050mm
LL=26.77
1748426.52mE
5947312.64mN

SSMH N/4
MH1050mm
LL=28.65
1748417.13mE
5947253.28mN

SSMH O/3
MH1050mm
LL=28.71
1748412.20mE
5947222.33mN

SSMH O/2
MH1050mm
LL=27.49
1748409.26mE
5947205.62mN

SSMH O/1
MH1050mm
LL=26.78
1748405.85mE
5947200.64mN



LEGEND

- NEW SANITARY SEWER MANHOLE
- NEW SANITARY SEWER
- EXISTING SANITARY SEWER
- STAGE BOUNDARY
- SANITARY SEWER TO VEST WITH FUTURE APPLICATION

- NOTES**
- ALL WORKS AND MATERIALS COMPLY WITH AUCKLAND COUNCIL & WATERCARE SERVICES LTD STANDARDS FOR ENGINEERING DESIGN AND CONSTRUCTION.
 - ALL SANITARY SEWER LINES ARE 150mmØ uPVC CLASS SN16 UNLESS STATED OTHERWISE.
 - ALL PIPE BEDDING COMPLIES WITH WATERCARE STANDARDS.
 - ALL PIPE CROSSINGS UNDER ROADS AND ACCESSWAYS HAVE BEEN HARDFILL BACKFILLED.
 - ALL PRIVATE LOT CONNECTIONS ARE 100mmØ
 - LOT BOUNDARIES ARE SUBJECT TO FINAL SURVEY.
 - ALL PIPE AND MH DIAMETERS ARE INTERNAL, AND SHOWN IN MILLIMETERS UNLESS OTHERWISE SPECIFIED.
 - ASBUILT DATA HAS BEEN SOURCED FROM A COMBINATION OF WOODS SURVEY MEASURED DATA AND CONTRACTOR RECEIVED DATA.

REVISION DETAILS	BY	DATE
1 ISSUED FOR INFORMATION	KR	5/02/2019
2 UPDATED CHAMBER DIA.	JW	24/04/19

SURVEYED	WOODS	WOODS Ltd LEVEL 1 BUILDING B 8 NUGENT STREET, GRAFTON AUCKLAND 1023
DESIGNED	JW	
DRAWN	KR	
CHECKED	NM	09 308 9229
APPROVED	JW	WOODS.CO.NZ



**MILLDALE
STAGE 1A
WASTEWATER
ASBUILT PLAN
SHEET 6 OF 9**

STATUS	ISSUED FOR INFORMATION	REV
SCALE	1:500 @ A3	2
COUNCIL	AUCKLAND COUNCIL	
DWG NO	P16-270-01A-405-AB	

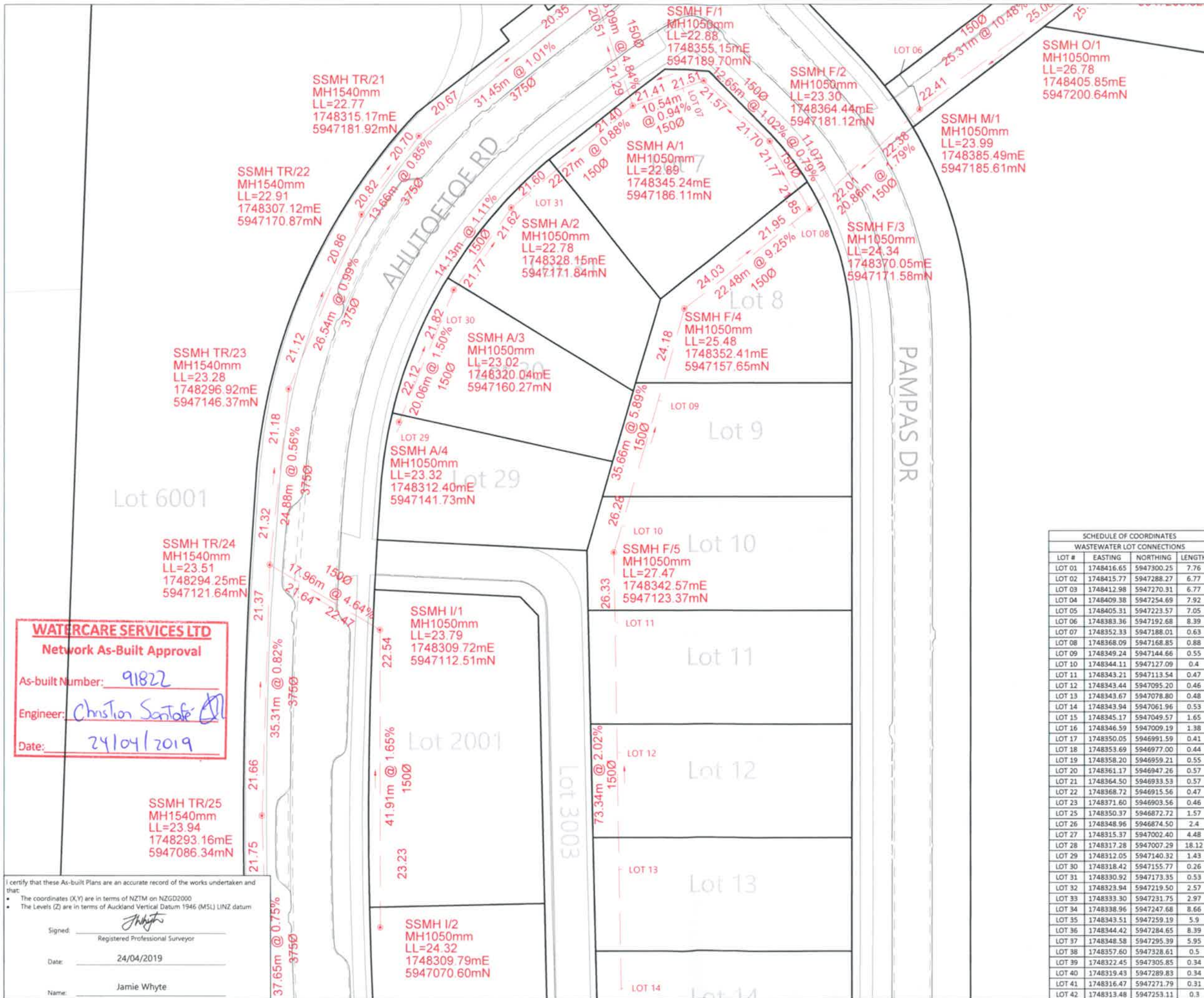
I certify that these As-built Plans are an accurate record of the works undertaken and that:

- The coordinates (X,Y) are in terms of NZTM on NZGD2000
- The Levels (Z) are in terms of Auckland Vertical Datum 1946 (MSL) LINZ datum

Signed: Jamie Whyte
Registered Professional Surveyor

Date: 24/04/2019

Name: Jamie Whyte



LEGEND

- NEW SANITARY SEWER MANHOLE
- NEW SANITARY SEWER
- EXISTING SANITARY SEWER
- STAGE BOUNDARY
- SANITARY SEWER TO VEST WITH FUTURE APPLICATION

- NOTES**
- ALL WORKS AND MATERIALS COMPLY WITH AUCKLAND COUNCIL & WATERCARE SERVICES LTD STANDARDS FOR ENGINEERING DESIGN AND CONSTRUCTION.
 - ALL SANITARY SEWER LINES ARE 150mmØ uPVC CLASS SN16 UNLESS STATED OTHERWISE.
 - ALL PIPE BEDDING COMPLIES WITH WATERCARE STANDARDS.
 - ALL PIPE CROSSINGS UNDER ROADS AND ACCESSWAYS HAVE BEEN HARDFILL BACKFILLED.
 - ALL PRIVATE LOT CONNECTIONS ARE 100mmØ
 - LOT BOUNDARIES ARE SUBJECT TO FINAL SURVEY.
 - ALL PIPE AND MH DIAMETERS ARE INTERNAL, AND SHOWN IN MILLIMETERS UNLESS OTHERWISE SPECIFIED.
 - ASBUILT DATA HAS BEEN SOURCED FROM A COMBINATION OF WOODS SURVEY MEASURED DATA AND CONTRACTOR RECEIVED DATA.

**SCHEDULE OF COORDINATES
WASTEWATER LOT CONNECTIONS**

LOT #	EASTING	NORTHING	LENGTH
LOT 01	1748416.65	5947300.25	7.76
LOT 02	1748415.77	5947288.27	6.77
LOT 03	1748412.98	5947270.31	6.77
LOT 04	1748409.38	5947254.69	7.92
LOT 05	1748405.31	5947223.57	7.05
LOT 06	1748383.36	5947192.68	8.39
LOT 07	1748352.33	5947188.01	0.63
LOT 08	1748368.09	5947168.85	0.88
LOT 09	1748349.24	5947144.66	0.55
LOT 10	1748344.11	5947127.09	0.4
LOT 11	1748343.21	5947113.54	0.47
LOT 12	1748343.44	5947095.20	0.46
LOT 13	1748343.67	5947078.80	0.48
LOT 14	1748343.94	5947061.96	0.53
LOT 15	1748345.17	5947049.57	1.65
LOT 16	1748346.59	5947009.19	1.38
LOT 17	1748350.05	5946991.59	0.41
LOT 18	1748353.69	5946977.00	0.44
LOT 19	1748358.20	5946959.21	0.55
LOT 20	1748361.17	5946947.26	0.57
LOT 21	1748364.50	5946933.53	0.57
LOT 22	1748368.72	5946915.56	0.47
LOT 23	1748371.60	5946903.56	0.46
LOT 25	1748350.37	5946872.72	1.57
LOT 26	1748348.96	5946874.50	2.4
LOT 27	1748315.37	5947002.40	4.48
LOT 28	1748317.28	5947007.29	18.12
LOT 29	1748312.05	5947140.32	1.43
LOT 30	1748318.42	5947155.77	0.26
LOT 31	1748330.92	5947173.35	0.53
LOT 32	1748323.94	5947219.50	2.57
LOT 33	1748333.30	5947231.75	2.97
LOT 34	1748338.96	5947247.68	8.66
LOT 35	1748343.51	5947259.19	5.9
LOT 36	1748344.42	5947284.65	8.39
LOT 37	1748348.58	5947295.39	5.95
LOT 38	1748357.60	5947328.61	0.5
LOT 39	1748322.45	5947305.85	0.34
LOT 40	1748319.43	5947289.83	0.34
LOT 41	1748316.47	5947271.79	0.31
LOT 42	1748313.48	5947253.11	0.3

REVISION DETAILS

NO	DESCRIPTION	BY	DATE
1	ISSUED FOR INFORMATION	KR	5/02/2019
2	UPDATED CHAMBER DIA.	JW	24/04/19

SURVEYED	WOODS	WOODS Ltd LEVEL 1 BUILDING B 8 NUGENT STREET, GRAFTON AUCKLAND 1023 09 308 9229 WOODS.CO.NZ
DESIGNED	JW	
DRAWN	KR	
CHECKED	NM	
APPROVED	JW	



**MILLDALE
STAGE 1A
WASTEWATER
ASBUILT PLAN
SHEET 7 OF 9**

STATUS	ISSUED FOR INFORMATION	REV
SCALE	1:500 @ A3	2
COUNCIL	AUCKLAND COUNCIL	
DWG NO	P16-270-01A-406-AB	

WATERCARE SERVICES LTD
Network As-Built Approval
As-built Number: 91822
Engineer: Christian Santofe
Date: 24/04/2019

I certify that these As-built Plans are an accurate record of the works undertaken and that:
• The coordinates (X,Y) are in terms of NZTM on NZGD2000
• The Levels (Z) are in terms of Auckland Vertical Datum 1946 (MSL) LINZ datum.

Signed: *J Whyte*
Registered Professional Surveyor
Date: 24/04/2019
Name: Jamie Whyte



I certify that these As-built Plans are an accurate record of the works undertaken and that:

- The coordinates (X,Y) are in terms of NZTM on NZGD2000
- The Levels (Z) are in terms of Auckland Vertical Datum 1946 (MSL) LINZ datum

Signed: *J Whyte*
Registered Professional Surveyor

Date: 24/04/2019

Name: Jamie Whyte

WATERCARE SERVICES LTD
Network As-Built Approval

As-built Number: 91822

Engineer: *Christian Santofe*

Date: 24/04/2019

LEGEND

NEW SANITARY SEWER MANHOLE	
NEW SANITARY SEWER	
EXISTING SANITARY SEWER	
STAGE BOUNDARY	
SANITARY SEWER TO VEST WITH FUTURE APPLICATION	

- NOTES**
- ALL WORKS AND MATERIALS COMPLY WITH AUCKLAND COUNCIL & WATERCARE SERVICES LTD STANDARDS FOR ENGINEERING DESIGN AND CONSTRUCTION.
 - ALL SANITARY SEWER LINES ARE 150mmØ uPVC CLASS SN16 UNLESS STATED OTHERWISE.
 - ALL PIPE BEDDING COMPLIES WITH WATERCARE STANDARDS.
 - ALL PIPE CROSSINGS UNDER ROADS AND ACCESSWAYS HAVE BEEN HARDFILL BACKFILLED.
 - ALL PRIVATE LOT CONNECTIONS ARE 100mmØ
 - LOT BOUNDARIES ARE SUBJECT TO FINAL SURVEY.
 - ALL PIPE AND MH DIAMETERS ARE INTERNAL AND SHOWN IN MILLIMETERS UNLESS OTHERWISE SPECIFIED.
 - ASBUILT DATA HAS BEEN SOURCED FROM A COMBINATION OF WOODS SURVEY MEASURED DATA AND CONTRACTOR RECEIVED DATA.

SCHEDULE OF COORDINATES
WASTEWATER LOT CONNECTIONS

LOT #	EASTING	NORTHING	LENGTH
LOT 01	1748416.65	5947300.25	7.76
LOT 02	1748415.77	5947288.27	6.77
LOT 03	1748412.98	5947270.31	6.77
LOT 04	1748409.38	5947254.69	7.92
LOT 05	1748405.31	5947223.57	7.05
LOT 06	1748383.36	5947192.68	8.39
LOT 07	1748352.33	5947188.01	0.63
LOT 08	1748368.09	5947168.85	0.88
LOT 09	1748349.24	5947144.66	0.55
LOT 10	1748344.11	5947127.09	0.4
LOT 11	1748343.21	5947113.54	0.47
LOT 12	1748343.44	5947095.20	0.46
LOT 13	1748343.67	5947078.80	0.48
LOT 14	1748343.94	5947061.96	0.53
LOT 15	1748345.17	5947049.57	1.65
LOT 16	1748346.59	5947009.19	1.38
LOT 17	1748350.05	5946991.59	0.41
LOT 18	1748353.69	5946977.00	0.44
LOT 19	1748358.20	5946959.21	0.55
LOT 20	1748361.17	5946947.26	0.57
LOT 21	1748364.50	5946933.53	0.57
LOT 22	1748368.72	5946915.56	0.47
LOT 23	1748371.60	5946903.56	0.46
LOT 25	1748350.37	5946872.72	1.57
LOT 26	1748348.96	5946874.50	2.4
LOT 27	1748315.37	5947002.40	4.48
LOT 28	1748317.28	5947007.29	18.12
LOT 29	1748312.05	5947140.32	1.43
LOT 30	1748318.42	5947155.77	0.26
LOT 31	1748330.92	5947173.35	0.53
LOT 32	1748323.94	5947219.50	2.57
LOT 33	1748333.30	5947231.75	2.97
LOT 34	1748338.96	5947247.68	8.66
LOT 35	1748343.51	5947259.19	5.9
LOT 36	1748344.42	5947284.65	8.39
LOT 37	1748348.58	5947295.39	5.95
LOT 38	1748357.60	5947328.61	0.5
LOT 39	1748322.45	5947305.85	0.34
LOT 40	1748319.43	5947289.83	0.34
LOT 41	1748316.47	5947271.79	0.31
LOT 42	1748313.48	5947253.11	0.3

REVISION DETAILS

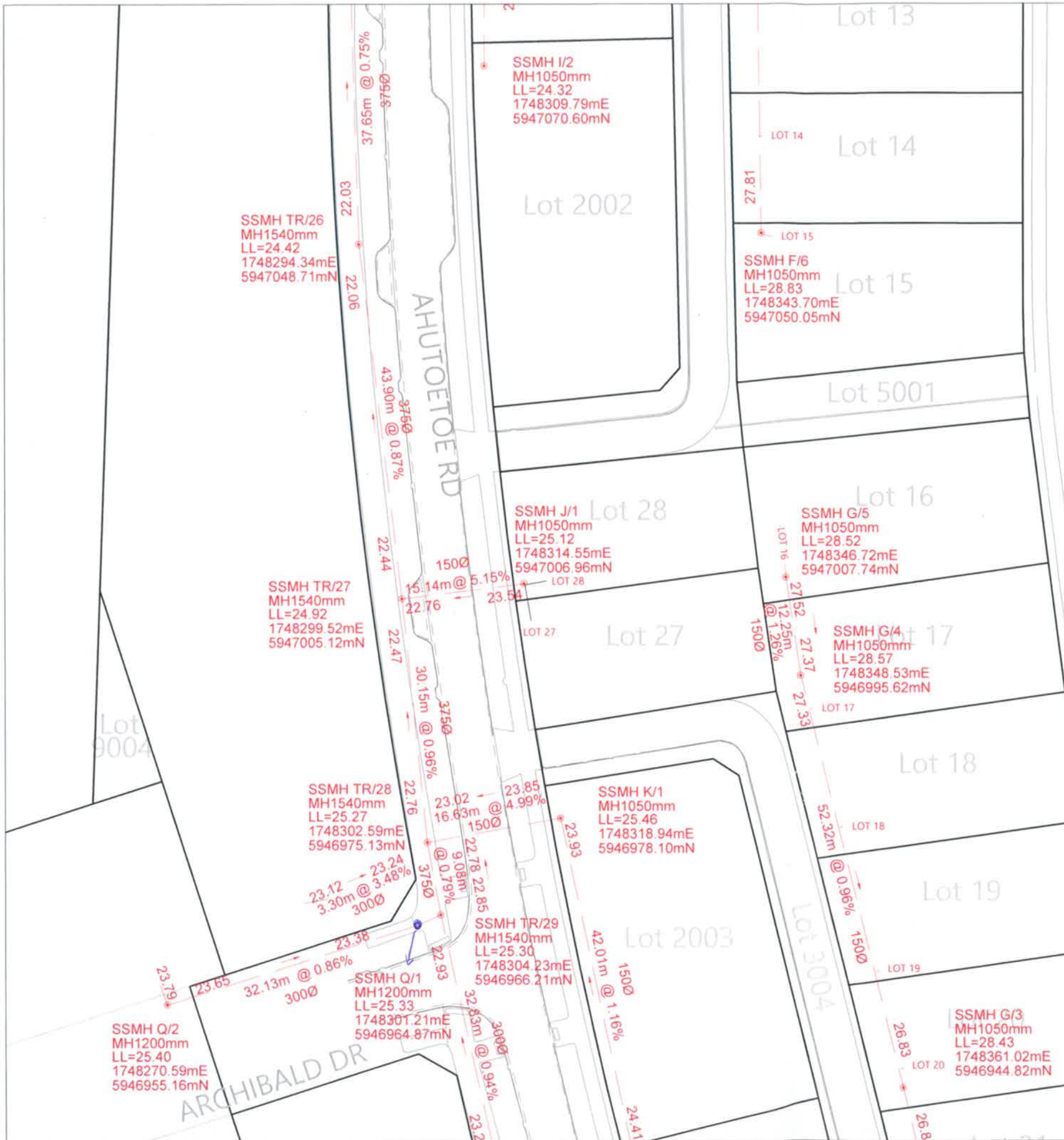
NO	DESCRIPTION	BY	DATE
1	ISSUED FOR INFORMATION	KR	5/02/2019
2	UPDATED CHAMBER DIA.	JW	24/02/19

SURVEYED	WOODS	WOODS Ltd LEVEL 1 BUILDING 8 8 NUGENT STREET, GRAFTON AUCKLAND 1023 09 308 9229 WOODS.CO.NZ
DESIGNED	JW	
DRAWN	KR	
CHECKED	NM	
APPROVED	JW	



MILLDALE
STAGE 1A
WASTEWATER
ASBUILT PLAN
SHEET 8 OF 9

STATUS	ISSUED FOR INFORMATION	REV
SCALE	1:500 @ A3	2
COUNCIL	AUCKLAND COUNCIL	
DWG NO	P16-270-01A-407-AB	



LL=25.40
1748270.59mE
5946955.16mN

ARCHIBALD DR

SSMH TR/30
MH1200mm
LL=25.76
1748311.35mE
5946934.16mN

SSMH K/2
MH1050mm
LL=25.98
1748327.65mE
5946937.01mN

LOT 20 1748361.02mE
5946944.82mN

I certify that these As-built Plans are an accurate record of the works undertaken and that:
 • The coordinates (X,Y) are in terms of NZTM on NZGD2000
 • The Levels (Z) are in terms of Auckland Vertical Datum 1946 (MSL) LINZ datum

Signed: *J Whyte*
Registered Professional Surveyor

Date: 24/04/2019

Name: Jamie Whyte



LEGEND

- NEW SANITARY SEWER MANHOLE
- NEW SANITARY SEWER
- EXISTING SANITARY SEWER
- STAGE BOUNDARY
- SANITARY SEWER TO VEST WITH FUTURE APPLICATION

- NOTES**
- ALL WORKS AND MATERIALS COMPLY WITH AUCKLAND COUNCIL & WATERCARE SERVICES LTD STANDARDS FOR ENGINEERING DESIGN AND CONSTRUCTION.
 - ALL SANITARY SEWER LINES ARE 150mmØ uPVC CLASS SN16 UNLESS STATED OTHERWISE.
 - ALL PIPE BEDDING COMPLIES WITH WATERCARE STANDARDS.
 - ALL PIPE CROSSINGS UNDER ROADS AND ACCESSWAYS HAVE BEEN HARDFILL BACKFILLED.
 - ALL PRIVATE LOT CONNECTIONS ARE 100mmØ
 - LOT BOUNDARIES ARE SUBJECT TO FINAL SURVEY.
 - ALL PIPE AND MH DIAMETERS ARE INTERNAL AND SHOWN IN MILLIMETERS UNLESS OTHERWISE SPECIFIED.
 - ASBUILT DATA HAS BEEN SOURCED FROM A COMBINATION OF WOODS SURVEY MEASURED DATA AND CONTRACTOR RECEIVED DATA.

REVISION DETAILS	BY	DATE
1 ISSUED FOR INFORMATION	KR	5/02/2019
2 UPDATED CHAMBER DIA.	JW	24/04/19

SURVEYED	WOODS	WOODS Ltd LEVEL 1 BUILDING B 8 NUGENT STREET, GRAFTON AUCKLAND 1023 09 308 9229 WOODS.CO.NZ
DESIGNED	JW	
DRAWN	KR	
CHECKED	NM	
APPROVED	JW	



MILLDALE
STAGE 1A
WASTEWATER
ASBUILT PLAN
SHEET 9 OF 9

STATUS	ISSUED FOR INFORMATION	REV
SCALE	1:500 @ A3	2
COUNCIL	AUCKLAND COUNCIL	
DWG NO	P16-270-01A-408-AB	

SCHEDULE OF COORDINATES			
WASTEWATER LOT CONNECTIONS			
LOT #	EASTING	NORTHING	LENGTH
LOT 01	1748416.65	5947300.25	7.76
LOT 02	1748415.77	5947288.27	6.77
LOT 03	1748412.98	5947270.31	6.77
LOT 04	1748409.38	5947254.69	7.92
LOT 05	1748405.31	5947223.57	7.05
LOT 06	1748383.36	5947192.68	8.39
LOT 07	1748352.33	5947188.01	0.63
LOT 08	1748368.09	5947168.85	0.88
LOT 09	1748349.24	5947144.66	0.55
LOT 10	1748344.11	5947127.09	0.4
LOT 11	1748343.21	5947113.54	0.47
LOT 12	1748343.44	5947095.20	0.46
LOT 13	1748343.67	5947078.80	0.48
LOT 14	1748343.94	5947061.96	0.53
LOT 15	1748345.17	5947049.57	1.65
LOT 16	1748346.59	5947009.19	1.38
LOT 17	1748350.05	5946991.59	0.41
LOT 18	1748353.69	5946977.00	0.44
LOT 19	1748358.20	5946959.21	0.55
LOT 20	1748361.17	5946947.26	0.57
LOT 21	1748364.50	5946933.53	0.57
LOT 22	1748368.72	5946915.56	0.47
LOT 23	1748371.60	5946903.56	0.46
LOT 25	1748350.37	5946872.72	1.57
LOT 26	1748348.96	5946874.50	2.4
LOT 27	1748315.37	5947002.40	4.48
LOT 28	1748317.28	5947007.29	18.12
LOT 29	1748312.05	5947140.32	1.43
LOT 30	1748318.42	5947155.77	0.26
LOT 31	1748330.92	5947173.35	0.53
LOT 32	1748323.94	5947219.50	2.57
LOT 33	1748333.30	5947231.75	2.97
LOT 34	1748338.96	5947247.68	8.66
LOT 35	1748343.51	5947259.19	5.9
LOT 36	1748344.42	5947284.65	8.39
LOT 37	1748348.58	5947295.39	5.95
LOT 38	1748357.60	5947328.61	0.5
LOT 39	1748322.45	5947305.85	0.34
LOT 40	1748319.43	5947289.83	0.34
LOT 41	1748316.47	5947271.79	0.31
LOT 42	1748313.48	5947253.11	0.3

SSMH TR/31
MH1200mm
LL=26.24
1748321.21mE
5946899.47mN

SSMH P/2
MH1050mm
LL=27.21
1748311.84mE
5946828.47mN

SSMH TR/32
MH1200mm
LL=26.64
1748333.68mE
5946865.46mN

Lot 2004

Lot 21

Lot 22

Lot 23

Lot 24

Lot 26

Lot 25

Lot 25

SSMH H/2
MH1050mm
LL=28.27
1748388.94mE
5946873.41mN

SSMH H/3
MH1050mm
LL=28.31
1748400.18mE
5946865.02mN

SSMH TR/33
MH1200mm
LL=26.85
1748346.48mE
5946846.76mN

SSMH P/1
MH1050mm
LL=26.85
1748344.72mE
5946840.10mN

SSMH TR/34
MH1200mm
LL=26.94
1748364.25mE
5946826.22mN

WATERCARE SERVICES LTD
Network As-Built Approval
As-built Number: 91822
Engineer: *Christian Santolucito*
Date: 24/04/2019

001

Lot 6002

Lot 72

Lot 71

73

75

PAMPAS DR

AHUTOETOE RD

PAMPAS DR